

WAAS CH 99326 W27A	APP CRS 272°	Rwy Idg TDZE 773 Apt Elev 774
--	------------------------	---

RNAV (GPS) RWY 27
GLADWIN ZETTEL MEMORIAL (GDW)

RNP APCH.	<p>⚠ NA Circling NA to Rwy 15 and 33. Rwy 27 helicopter visibility reduction below 1 SM NA. DME/DME RNP-0.3 NA. Procedure NA at night. Use Mount Pleasant altimeter setting; when not received, use Midland altimeter setting and increase all MDA 20 feet; increase LP and LNAV Cats C/D visibility 1/8 SM And Circling Cats C/D visibility 1/4 SM.</p>	MISSED APPROACH: Climbing left turn to 2600 direct WHIPP and hold.
-----------	--	---

GREAT LAKES APP CON ★ 126.45 235.625	UNICOM 122.8 (CTAF) 0
--	---------------------------------

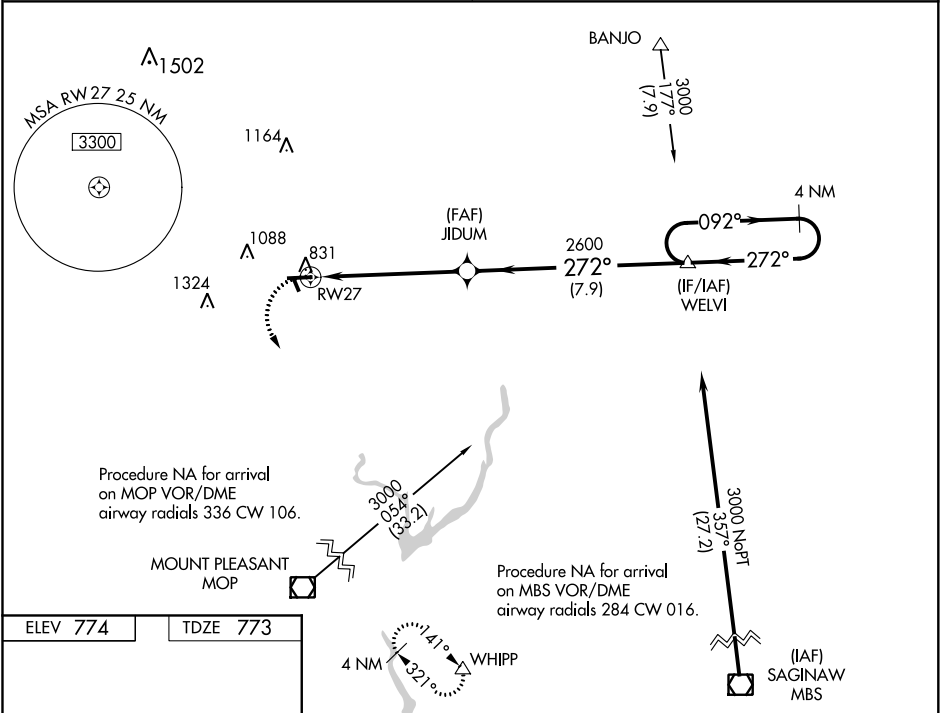


Diagram of RWY 27 showing dimensions and approach angles:

- Runway length: 4699 X 75
- Approach angle: 272° to RWY 27
- Distance from start of runway to approach fix: 2.580 X 130
- Distance from approach fix to runway end: 0.33 UP 133

MIRL Rwy 9-27
REIL Rws 9 and 27

Diagram of the arrival procedure for RWY 27, including the holding pattern and descent angles:

- WHIPP (VOR/DME) station.
- VGSI and descent angles not coincident (VGSI Angle 3.00/TCH 25).
- 4 NM Holding Pattern.
- JIDUM (VOR/DME) station.
- Descent angle: 272°.
- Distance from JIDUM to RWY 27: 5.6 NM.
- Distance from JIDUM to WELVI: 7.9 NM.
- WELVI (VOR/DME) station.
- Descent angle: 092°.
- Distance from WELVI to RWY 27: 3000.

CATEGORY	A	B	C	D
LP MDA	1280-1	507 (600-1)	1280-1 ³ / ₈	507 (600-1 ³ / ₈)
LNAV MDA	1280-1	507 (600-1)	1280-1 ³ / ₈	507 (600-1 ³ / ₈)
CIRCLING	1420-1 646 (700-1)	1500-1 726 (800-1)	1500-2 726 (800-2)	1500-2 ¹ / ₄ 726 (800-2 ¹ / ₄)

EC-1, 03 DEC 2020 to 31 DEC 2020

EC-1, 03 DEC 2020 to 31 DEC 2020