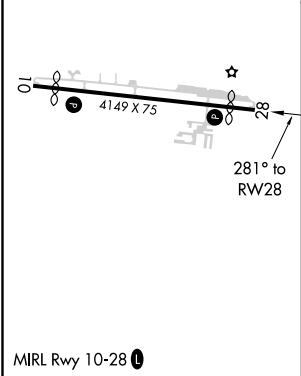
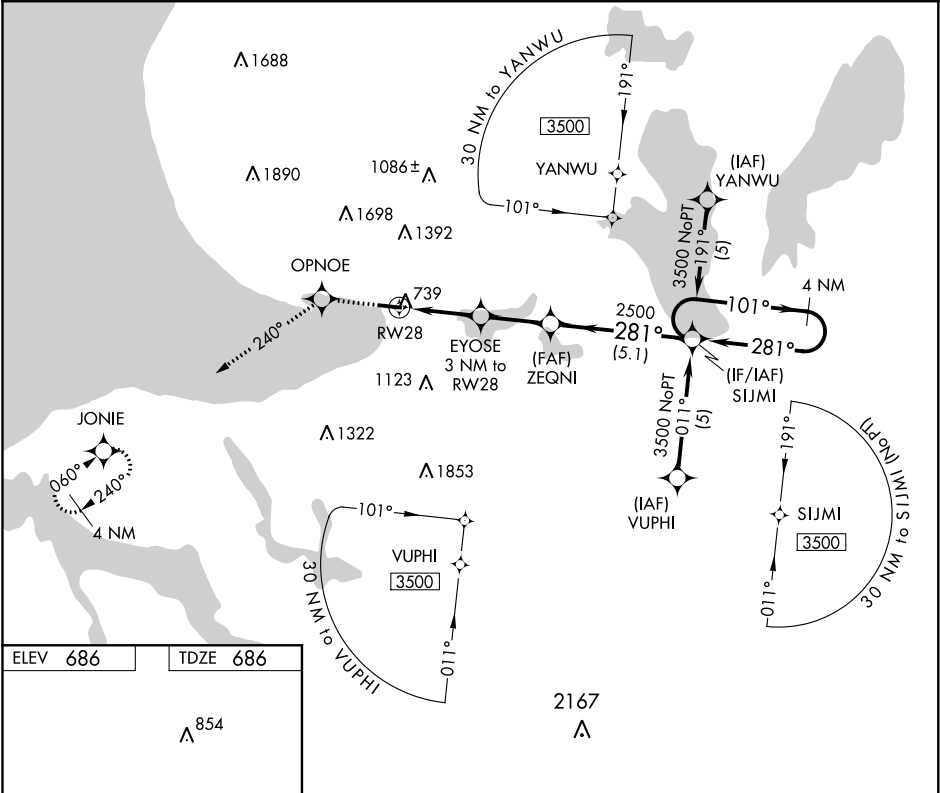





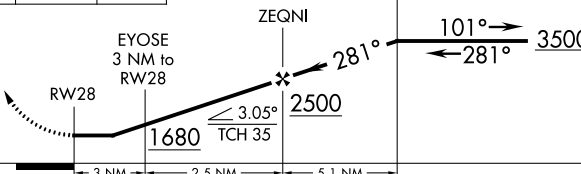
APP CRS	Rwy Idg	3705
281°	TDZE	686
	Apt Elev	686

RNAV (GPS) RWY 28
HARBOR SPRINGS (MGN)

<p>⚠ DME/DME RNP-0.3 NA. Helicopter visibility reduction below 1 SM NA. When local altimeter setting not received, use Pellston altimeter setting and increase all MDAs 40 feet. Procedure NA at night.</p>	<p>MISSED APPROACH: Climb to 3400 direct OPNOE and via 240° track to JONIE and hold.</p>
--	--

AWOS-3 119.925	MINNEAPOLIS CENTER 134.6 354.05	UNICOM 122.8 (CTAF) 0
-------------------	------------------------------------	---------------------------------



3400	OPNOE	JONIE	VGSI and descent angles not coincident (VGSI Angle 4.00/TCH 35).		
	 tr 240°				
					
CATEGORY	A		B	C	D
LNAV MDA	1120-1		434 (500-1)	NA	
CIRCLING	1380-1 694 (700-1)		1500-1¼ 814 (900-1¼)	NA	

EC-1, 03 DEC 2020 to 31 DEC 2020

EC-1, 03 DEC 2020 to 31 DEC 2020