

LOC/DME I-LUK 110.9 Chan 46	APP CRS 205°	Rwy Idg 6101 TDZE 475 Apt Elev 483
---	------------------------	---

ILS or LOC RWY 21L

CINCINNATI MUNI AIRPORT LUNKEN FIELD (LUK)

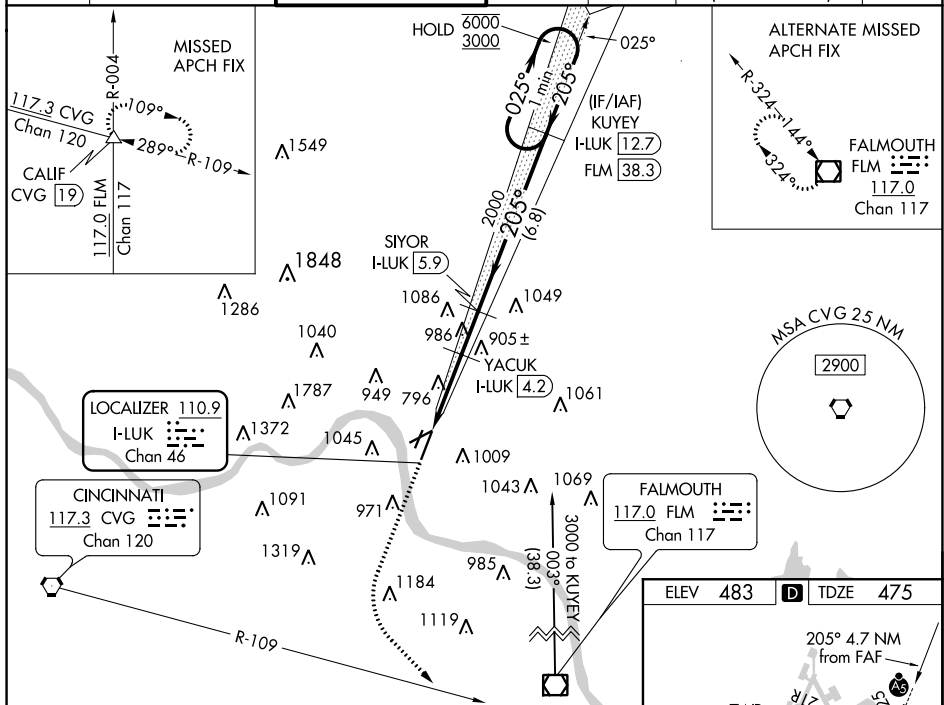
DME required.

MALSR



MISSED APPROACH:
Climb to 2000 then
climbing left turn to
2600 on heading 140°
and CVG VORTAC
R-109 to CALF/CVG
19 DME and hold.

ATIS 120.25	CINCINNATI APP CON 121.0 254.25	LUNKEN TOWER ★ 118.7 (CTAF) 0 257.8	GND CON 121.9	CLNC DEL 121.9	CLNC DEL 124.9 (when twr closed)	UNICOM 122.95
-----------------------	---	---	-------------------------	--------------------------	---	-------------------------



2000 ↑	2600 hdg 140°	CVG R-109	CALIF △	SIYOR I-LUK [5.9]	KUYEY I-LUK [12.7]	One Minute Holding Pattern
*LOC only.				YACUK I-LUK [4.2]	2000	025° → 6000 ← 205° 3000
I-LUK [1.2]				*I-LUK [3.3]	*1460	GS 3.00° TCH 39
2.1 NM		0.9 NM	1.7 NM	6.8 NM		
CATEGORY	A	B	C	D		
S-ILS 21L	798/40			323 (400-3/4)		
S-LOC 21L	1200/40	725 (800-3/4)	1200-1 1/2	725 (800-1 1/2)		
C CIRCLING	1260-1 777 (800-1)	1360-1 1/4 877 (900-1 1/4)	1360-2 1/2 877 (900-2 1/2)	1400-3 917 (1000-3)		

