

APP CRS	Rwy Idg	6101
025°	TDZE	481
	Apt Elev	483

RNAV (GPS) RWY 3R

CINCINNATI MUNI AIRPORT LUNKEN FIELD (LUK)

RNP APCH.

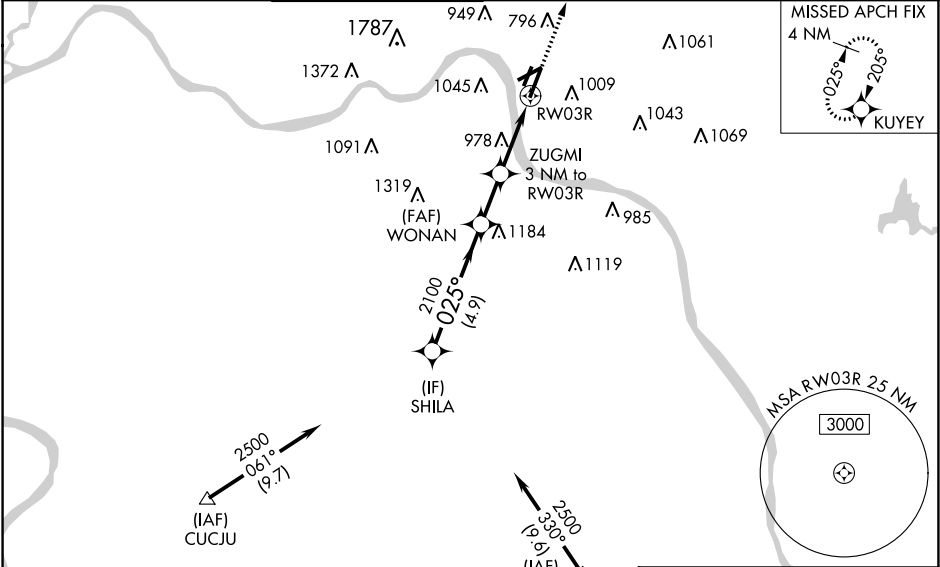
▼

▲

Circling NA for Cat D north of Rwy 7 and northwest of Rwy 21R. Circling Rwy 3L, 7, 21R NA at night. Rwy 3R helicopter visibility reduction below $\frac{3}{4}$ SM NA. When local altimeter setting not received, use Cincinnati/Northern Kentucky Intl altimeter setting and increase all MDA 100 feet and LNAV Cat A visibility $\frac{1}{4}$ SM; increase Circling Cat B/D visibility $\frac{1}{4}$ SM and Circling Cat C visibility $\frac{1}{2}$ SM. VDP NA when using Cincinnati/Northern Kentucky Intl altimeter setting.

MISSED APPROACH:
Climb to 2600 direct KUYEY and hold.

ATIS 120.25	CINCINNATI APP CON 121.0 254.25	LUNKEN TOWER ★ 118.7(CTAF) 257.8	GND CON 121.9	CLNC DEL 121.9	CLNC DEL 124.9 (when twr closed)	UNICOM 122.95
----------------	------------------------------------	-------------------------------------	------------------	-------------------	--	------------------



ELEV 483	TDZE 481
REIL Rwy 3R	
HIRL Rwy 3R-21L	
MIRL Rws 3L-21R and 7-25	

SHILA

WONAN

ZUGMI
3 NM to RW03R

2600 KUYEY

2500

2100

1480

2600

025°

3.00°

TCH 47

TCH 44

4.9 NM

1.9 NM

0.6 NM

2.4 NM

CATEGORY

A

B

C

D

LNAV MDA

1280-1
799 (800-1)

1280-1¼
799 (800-1¼)

1280-2½
799 (800-2½)

799 (800-2½)

CIRCLING

1300-1¼
817 (900-1¼)

1360-1¼
877 (900-1¼)

1360-2½
877 (900-2½)

1360-2¾
877 (900-2¾)

TWR 553

5127 X 100

3801 X 100

6101 X 150

025° to RW03R