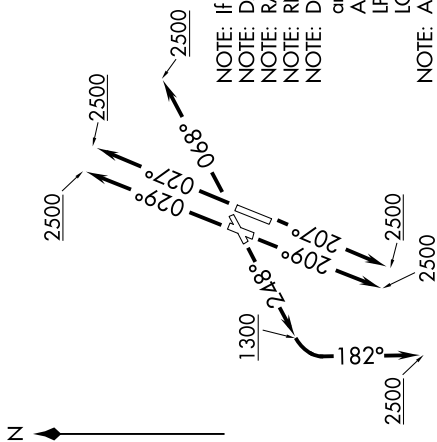
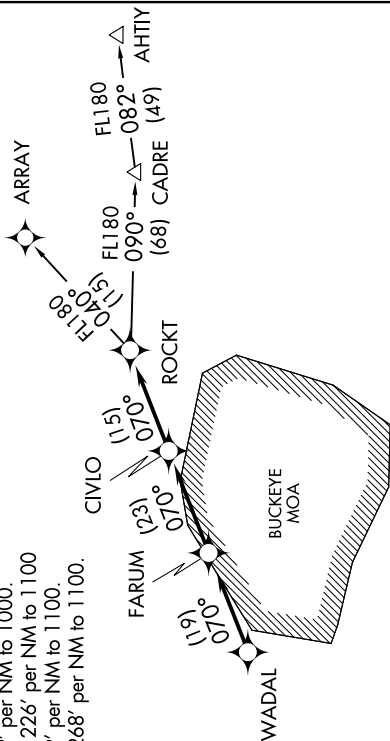


**TOP ALTITUDE:  
ASSIGNED BY ATC.**

## TAKEOFF MINIMUMS

ATIS 120.25  
 LUNKEN TOWER ★  
 118.7 (CTAF) 257.8  
 GND CON  
 121.9  
 CLNC DEL  
 121.9  
 CLNC DEL  
 124.9 (When twr closed)  
 CINCINNATI DEP CO  
 210 254.25

Rwy 3L: 400-2 with minimum climb of 226' per NM to 1300  
or standard with minimum climb of 423' per NM to 1000.  
Rwy 3R: 400-2 with minimum climb of 233' per NM to 1300  
or standard with minimum climb of 384' per NM to 1100.  
Rwy 7: 400-1 $\frac{3}{4}$  with minimum climb of 279' per NM to 1000  
or standard with minimum climb of 451' per NM to 1000.  
Rwy 21L: 500-2 $\frac{1}{2}$  with minimum climb of 254' per NM to 1100  
or standard with minimum climb of 439' per NM to 1000.  
Rwy 21R: 500-2 $\frac{3}{4}$  with minimum climb of 226' per NM to 1100  
or standard with minimum climb of 489' per NM to 1100.  
Rwy 25: 600-2 $\frac{1}{2}$  with minimum climb of 268' per NM to 1100.



NOTE: If unable to accept climb rates, advise ATC on initial contact.  
NOTE: DME/DME/IRU or GPS required.  
NOTE: RADAR required.  
NOTE: RNAV 1.  
NOTE: Departure procedure limited to aircraft with the following desc

NOTE: Departure procedure limited to aircraft with the following destination airports and departure times as indicated:

Anytime - ABE, AGC, ALB, AVP, BDL, BKL, BOS, BWI, CAK, CGF, CLE, LNN, LPR, MDT, MHT, PHL, PIT, PNE, PVD, PWM, SWF, TTN, UNV, and overseas flights. LGA between 1000-1800 UTC.

NOTE: ARRAY TRANSITION (ROCKET ARRAY) limited to aircraft landing: BKL, CAK, CLE, CGF, LNN, LPR.  
NOTE: Accelerate to 250K, if unable advise ATC.

NOTE: Chart not to scale.

(NARRATIVE ON FOLLOWING PAGE)

EC-2, 03 DEC 2020 to 31 DEC 2020

ROCKT ONE DEPARTURE (RNAV)  
(ROCKT1.ROCKT) 15AUG19

CINCINNATI, OHIO

CINCINNATI MUNI AIRPORT LUNKEN FIELD (LUK)