



CLEVELAND, OHIO

AL-84 (FAA)

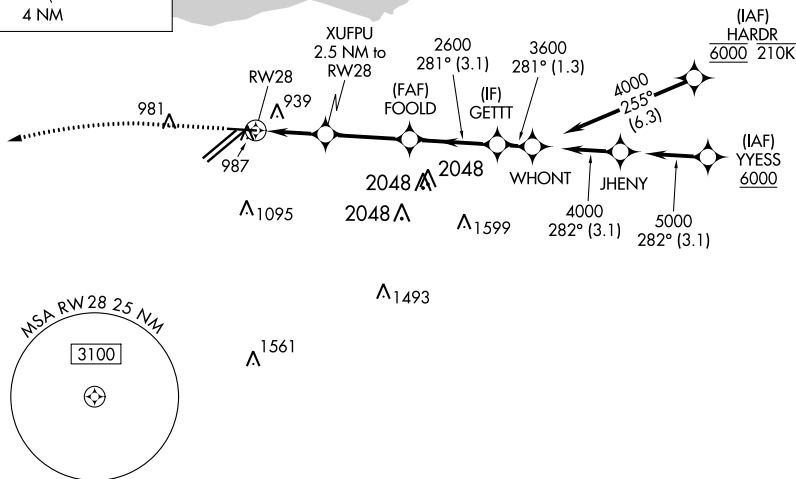
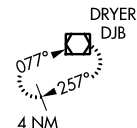
20310

WAAS CH 40109 W28A	APP CRS 281°	Rwy Idg 6018 TDZE 799 Apt Elev 799
--	------------------------	---

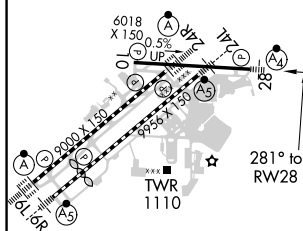
RNAV (GPS) RWY 28
CLEVELAND-HOPKINS INTL (CLE)

RNP APCH.			MALSF 		MISSED APPROACH: Climb to 1400 then climbing left turn to 3000 direct DJB VOR/DME and hold.	
 For uncompensated Baro-VNAV systems, LNAV/VNAV NA below -18°C (0°F) or above 54°C (130°F). Circling Rwy 10 NA at night. Inop table does not apply to LPV.						
D-ATIS ARR 127.85 DEP 132.375		CLEVELAND APP CON 124.0 346.325	CLEVELAND TOWER 124.5 273.45	GND CON 121.7 273.45	CLNC DEL 125.05 273.45	CPDLC

MISSED APCH FIX



ELEV 799	D	TDZE 799
----------	----------	----------



REIL Rwy 10
TDZ/CL Rwy 6L, 6R, 24L, and 24R
HIRL Rwy 6L-24R, 6R-24L and 10-28

*LNAV only.					
CATEGORY	A	B	C	D	
LPV DA	999/40		200 (200-¾)		
LNAV/ VNAV DA	1168/40		369 (400-¾)		
LNAV MDA	1260/40 461 (500-¾)		1260/60 461 (500-1¼)		
C CIRCLING	1420-1 621 (700-1)		1420-1½ 621 (700-1¾)	1420-2 621 (700-2)	

CLEVELAND, OHIO
Amdt 3 24MAY18

41°25'N-81°51'W

CLEVELAND-HOPKINS INTL (CLE)
RNAV (GPS) RWY 28

EC-2, 03 DEC 2020 to 31 DEC 2020

EC-2, 03 DEC 2020 to 31 DEC 2020