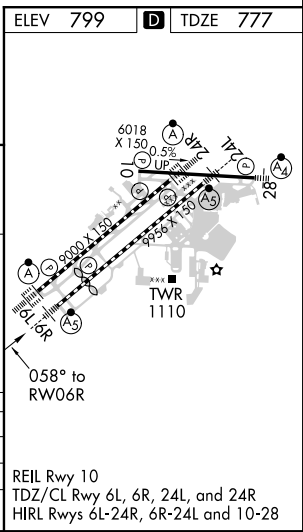
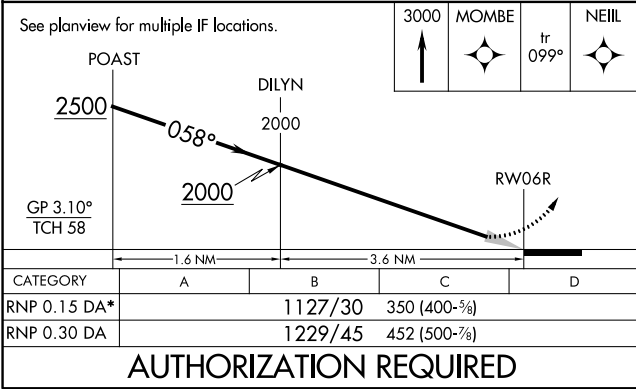
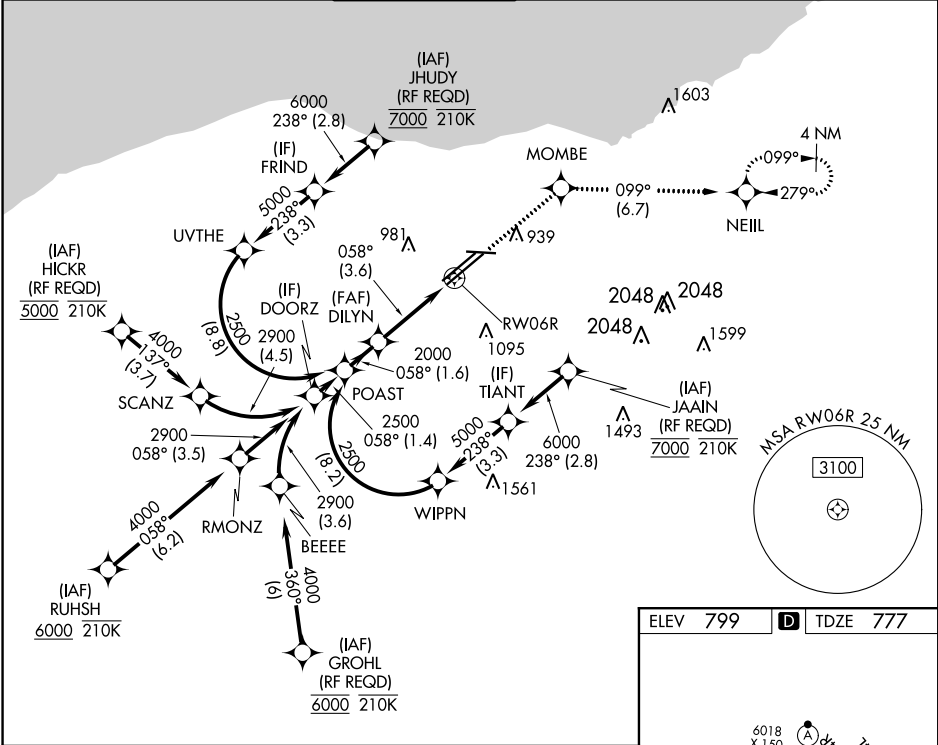


APP CRS	Rwy Idg	8029
058°	TDZE	777
	Apt Elev	799

RNAV (RNP) Z RWY 6R
CLEVELAND-HOPKINS INTL (CLE)

RNP AR APCH.		MALSR	MISSED APPROACH: Climb to 3000 direct MOMBE and on track 099° to NEIL and hold. * Missed approach requires minimum climb of 270 feet per NM to 1400.		
▼ For uncompensated Baro-VNAV systems, procedure NA below -18°C (0°F) or above 46°C (114°F). For inop ALS, increase RNP 0.15 all Cots visibility to RVR 5500.					
D-ATIS	CLEVELAND APP CON	CLEVELAND TOWER	GND CON	CLNC DEL	CPDLC
ARR 127.85 DEP 132.375	124.0 346.325	124.5 273.45	121.7 273.45	125.05 273.45	



EC-2, 03 DEC 2020 to 31 DEC 2020

EC-2, 03 DEC 2020 to 31 DEC 2020