

CLEVELAND, OHIO

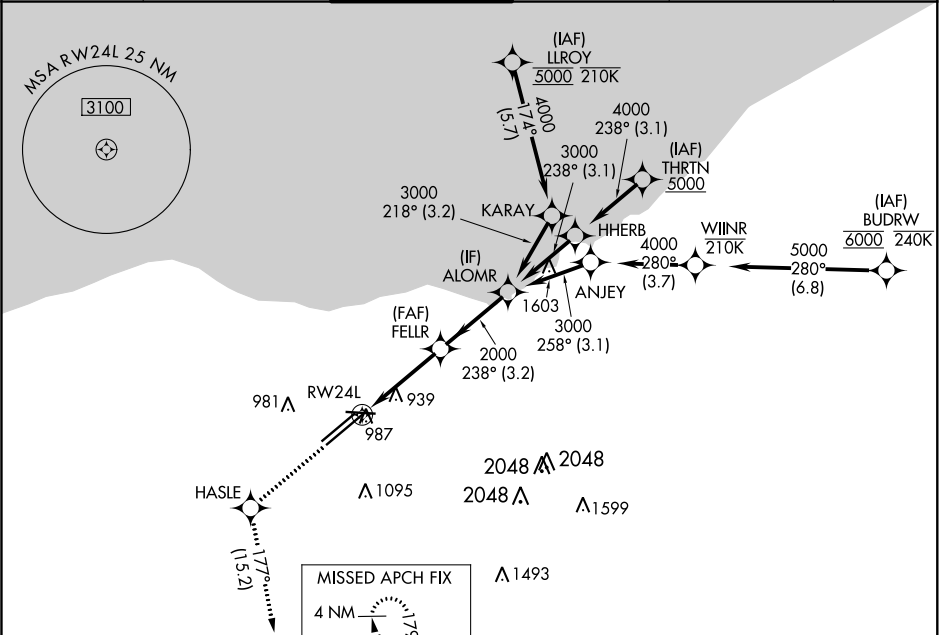
AL-84 (FAA)

20310

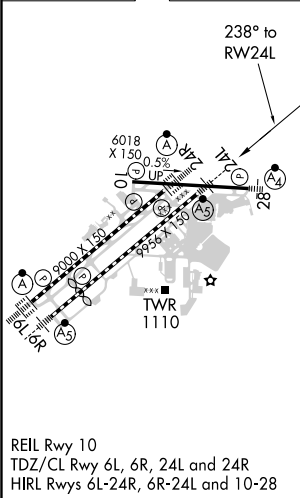
WAAS CH <b>77506</b> <b>W24B</b>	APP CRS <b>238°</b>	Rwy Idg TDZE <b>786</b> Apt Elev <b>799</b>
--	------------------------	---

**RNAV (GPS) Y RWY 24L**  
CLEVELAND-HOPKINS INTL (CLE)

RNP APCH. ▼ Circling Rwy 10 NA at night. For uncompensated Baro-VNAV systems, LNAV/VNAV NA below -19°C or above 54°C.		MALSR 	MISSED APPROACH: Climb to 3000 direct HASLE and on track 177° to SAROW and hold.		
D-ATIS ARR <b>127.85</b> DEP <b>132.375</b>	CLEVELAND APP CON <b>124.0 346.325</b>	CLEVELAND TOWER <b>124.5 273.45</b>	GND CON <b>121.7 273.45</b>	CLNC DEL <b>125.05 273.45</b>	CPDLC



ELEV <b>799</b>	<b>D</b>	TDZE <b>786</b>
-----------------	----------	-----------------



3000 ↑		HASLE ✱	fr 177°	SAROW △	VGSI and RNAV glidepath not coincident (VGSI Angle 3.00/TCH 48).		
*LNAV only.							
CATEGORY		A		B		C	D
LPV	DA	986/18		200 (200-½)			
LNAV/ VNAV	DA	1168/35		382 (400-¾)			
LNAV	MDA	1240/24 454 (500-½)		1240/45 454 (500-¾)			
<b>C</b> CIRCLING		1420-1 621 (700-1)		1420-1¾ 621 (700-1¾)		1420-2 621 (700-2)	

CLEVELAND, OHIO  
Amdt 5 20JUN19

41°25'N-81°51'W

CLEVELAND-HOPKINS INTL (CLE)  
**RNAV (GPS) Y RWY 24L**

EC-2, 03 DEC 2020 to 31 DEC 2020

EC-2, 03 DEC 2020 to 31 DEC 2020