

LOC/DME I-CBP	APP CRS	Rwy Idg	8000
109.1	101°	TDZE	815
Chan 28		Apt Elev	815

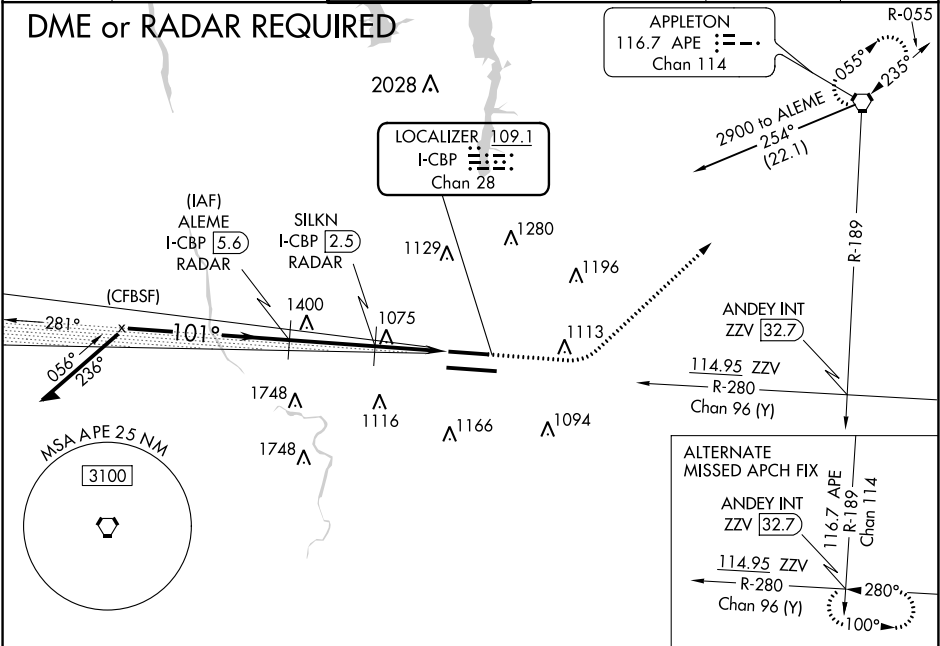
ILS or LOC RWY 10L  
JOHN GLENN COLUMBUS INTL (CMH)

**V** \*\* RVR 1800 authorized with the use of FD or AP or HUD to DA.  
**A** For inop ALS, increase SILKN fix minimums S-LOC 10L Cat C/D visibility to 1 $\frac{1}{2}$  SM. Simultaneous approach authorized.

MALSR

MISSED APPROACH: Climb to 1400 then climbing left turn to 3000 direct APE VORTAC and hold.

D-ATIS	COLUMBUS APP CON	COLUMBUS TOWER	GND CON	CLNC DEL	CPDLC
124.6	125.95 371.975	132.7 257.8	121.9 348.6	126.3	



Remain within 10 NM	ALEME I-CBP 5.6 RADAR	1400	3000	APE	ELEV 815	TDZE 815
2900	281°	2700	101°	2700	101° 5.8 NM from FAF	
GS 3.00° TCH 50	*1700	*I-CBP 1.5	I-CBP DME ANTENNA	*LOC only.		
	3.1 NM	1.1 NM	1.6 NM			
CATEGORY	A	B	C	D		
S-ILS 10L	** 1015/24 200 (200- $\frac{1}{2}$ )					
S-LOC 10L	1700/40	885 (900- $\frac{3}{4}$ )	1700-2	885 (900-2)		
CIRCLING	1700-1 $\frac{1}{4}$	885 (900-1 $\frac{1}{4}$ )	1700-2 $\frac{3}{4}$ 885 (900-2 $\frac{3}{4}$ )	1700-3 885 (900-3)		
SILKN FIX MINIMUMS (DME OR RADAR REQUIRED)						
S-LOC 10L	1380/24	565 (600- $\frac{1}{2}$ )	1380-1 $\frac{1}{4}$	565 (600-1 $\frac{1}{4}$ )	TDZ/CL Rwy 10R-28L HIRL Rwy 10R-28L and 10L-28R	
CIRCLING	1380-1	565 (600-1)	1520-2 705 (800-2)	1540-2 $\frac{1}{4}$ 725 (800-2 $\frac{1}{4}$ )	FAF to MAP 5.8 NM	
					Knots	60 90 120 150 180
					Min:Sec	5:48 3:52 2:54 2:19 1:56