

LOC/DME I-AQI <b>111.75</b> Chan <b>54</b> (Y)	APP CRS <b>101°</b>	Rwy Idg <b>10113</b> TDZE <b>809</b> Apt Elev <b>815</b>
--	------------------------	--

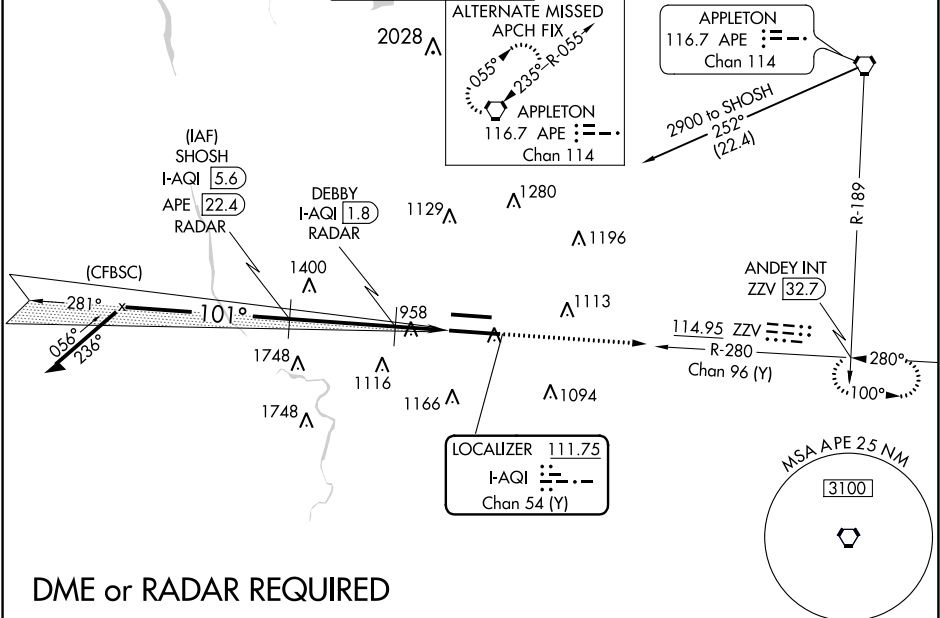
ILS or LOC RWY 10R  
JOHN GLENN COLUMBUS INTL (CMH)

**Simultaneous approach authorized. DME or radar required.**  
**For inop ALS, increase S-LOC 10R Cats C/D visibility to 1½ SM, increase DEBBY fix minimums S-LOC 10R Cats C/D visibility to 1½ SM.**

**MALSR**

**MISSED APPROACH:** Climb to 3000 on ZZY VOR/DME R-280 direct ANDEY INT/ZZV 32.7 DME and hold.

D-ATIS <b>124.6</b>	COLUMBUS APP CON <b>125.95 371.975</b>	COLUMBUS TOWER <b>132.7 257.8</b>	GND CON <b>121.9 348.6</b>	CLNC DEL <b>126.3</b>	CPDLC
------------------------	---	--------------------------------------	-------------------------------	--------------------------	-------



DME or RADAR REQUIRED

VGSI and ILS glidepath not coincident (VGSI Angle 3.00/ TCH 70).  
Remain within 10 NM  
GS 3.00° TCH 54

SHOSH I-AQI 5.6 RADAR  
DEBBY I-AQI 1.8 RADAR  
DME ANTENNA  
I-AQI 0.9  
I-AQI 0.2  
\*1480  
\*LOC only.

ELEV 815  
D TDZE 809

3000  
ZZV R-280  
ANDEY INT

101° 5.8 NM from FAF

10114 X 150  
TWR 1028  
8000 X 150

CATEGORY	A	B	C	D
S-ILS 10R	1009/18 200 (200-½)			
S-LOC 10R	1480/24 671 (700-½)	1480-1½ 671 (700-1½)		
CIRCLING	1480-1 665 (700-1)	1520-2 705 (800-2)	1540-2¼ 725 (800-2¼)	
DEBBY FIX MINIMUMS (DME OR RADAR REQUIRED)				
S-LOC 10R	1220/24 411 (500-½)	1220/40 411 (500-¾)		
CIRCLING	1340-1 525 (600-1)	1520-2 705 (800-2)	1540-2¼ 725 (800-2¼)	

TDZ/CL Rwy 10R-28L  
HIRL Rwy 10R-28L and 10L-28R  
FAF to MAP 5.8 NM

Knots	60	90	120	150	180
Min:Sec	5:48	3:52	2:54	2:19	1:56

EC-2, 03 DEC 2020 to 31 DEC 2020

EC-2, 03 DEC 2020 to 31 DEC 2020