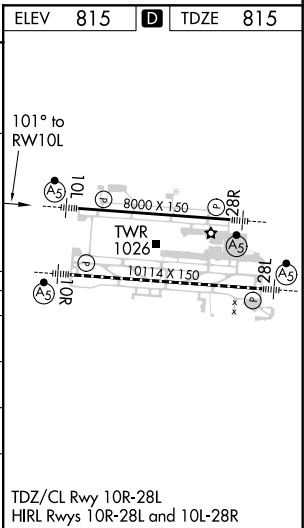
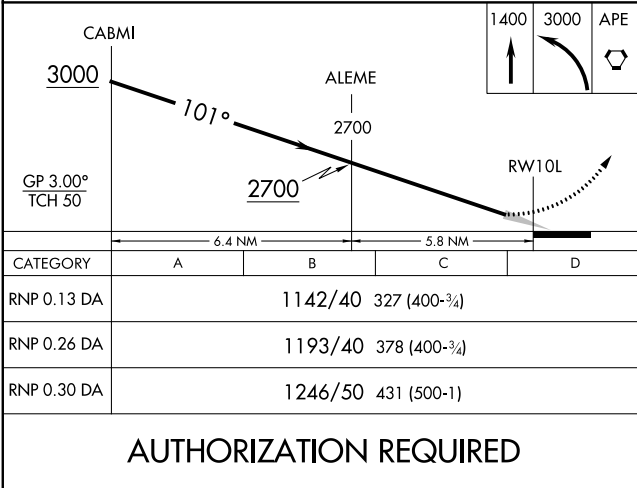
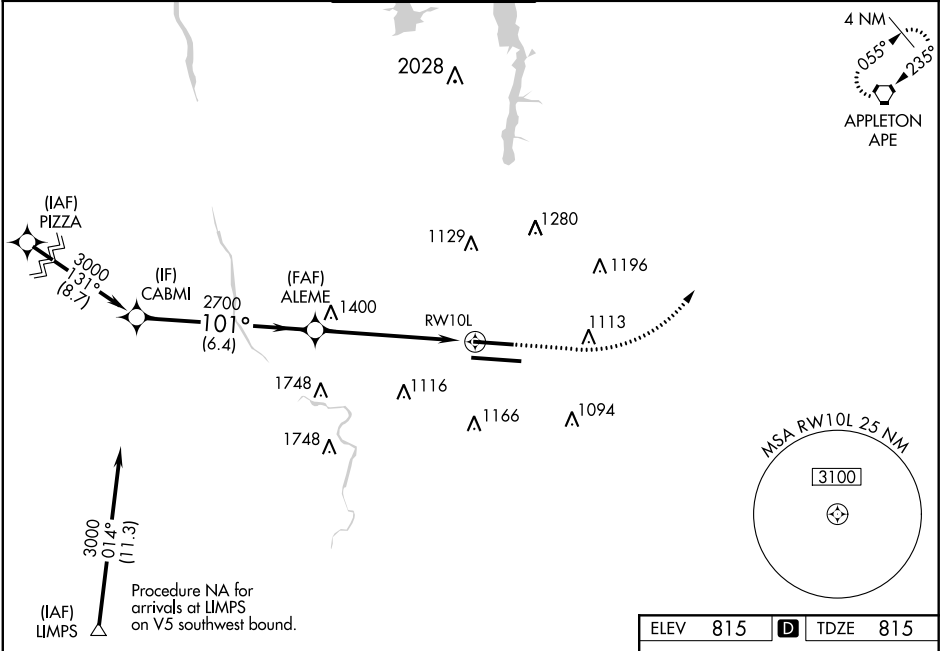


APP CRS	Rwy Idg	8000
101°	TDZE	815
	Apt Elev	815

RNAV (RNP) Z RWY 10L

JOHN GLENN COLUMBUS INTL (CMH)

RNP AR APCH.		MALSR	MISSED APPROACH: Climb to 1400 then climbing left turn to 3000 direct APE VORTAC and hold.		
Simultaneous approach authorized. For uncompensated Baro-VNAV systems, procedure NA below -18°C or above 54°C. For inoperative ALS, increase RNP 0.13 all Cats visibility to RVR 5500, increase RNP 0.26 all Cats visibility to 1½ SM and increase RNP 0.30 all Cats visibility to 1½ SM.					
D-ATIS	COLUMBUS APP CON	COLUMBUS TOWER	GND CON	CLNC DEL	CPDLC
124.6	125.95 371.975	132.7 257.8	121.9 348.6	126.3	



EC-2, 03 DEC 2020 to 31 DEC 2020

EC-2, 03 DEC 2020 to 31 DEC 2020