

WAAS CH 40299 W10B	APP CRS 101°	Rwy Idg TDZE Apt Elev	8000 815 815
--	------------------------	-----------------------------	---

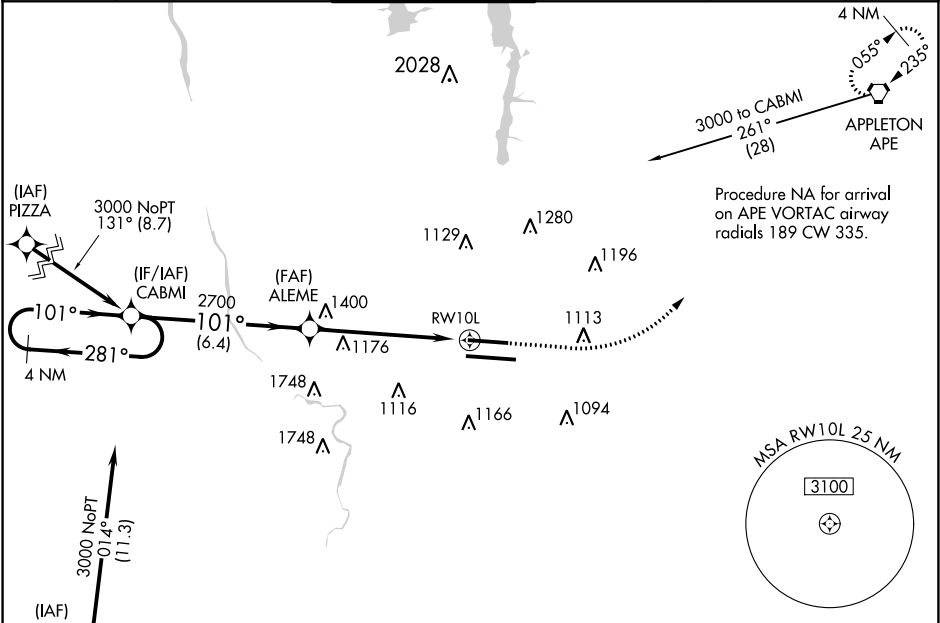
RNAV (GPS) Y RWY 10L
JOHN GLENN COLUMBUS INTL (CMH)

⚠ For uncompensated Baro-VNAV systems, LNAV/VNAV NA below -18°C (0°F) or above 54°C (130°F). DME/DME RNP-0.3 NA. LNAV procedure NA during simultaneous operations. Use of FD or AP providing RNAV track guidance required during simultaneous operations. Simultaneous approach authorized. ** RVR 1800 authorized with use of FD or AP or HUD to DA.

MALSR

⚠ MISSED APPROACH: Climb to 1400 then climbing left turn to 3000 direct APE VORTAC and hold.

D-ATIS 124.6	COLUMBUS APP CON 125.95 371.975	COLUMBUS TOWER 132.7 257.8	GND CON 121.9 348.6	CLNC DEL 126.3	CPDLC
------------------------	---	--------------------------------------	-------------------------------	--------------------------	-------



ELEV	815	D	TDZE	815
------	-----	----------	------	-----

4 NM Holding Pattern

CABMI

ALEME

2700

101°

281°

3000

GP 3.00° TCH 50

1400

3000

APE

* 1.9 NM to RW10L

* LNAV only.

RW10L

2700

6.4 NM

3.8 NM

1.9 NM

CATEGORY	A	B	C	D
LPV DA**	1015/24		200 (200-½)	
LNAV/VNAV DA	1199/40		384 (400-¾)	
LNAV MDA	1480/24 665 (700-½)		1480-1½ 665 (700-1½)	
C CIRCLING	1480-1 665 (700-1)		1520-2 705 (800-2) 1540-2¼ 725 (800-2¼)	

101° to RW10L

101

10114 X 150

28R

28L

10R

TWR 1026

8000 X 150

TDZ/CL Rwy 10R-28L
HIRL Rwy 10R-28L and 10L-28R

EC-2, 03 DEC 2020 to 31 DEC 2020

EC-2, 03 DEC 2020 to 31 DEC 2020