

WAAS CH 99603 W10A	APP CRS 101°	Rwy Idg 10113 TDZE 809 Apt Elev 815
--	------------------------	--

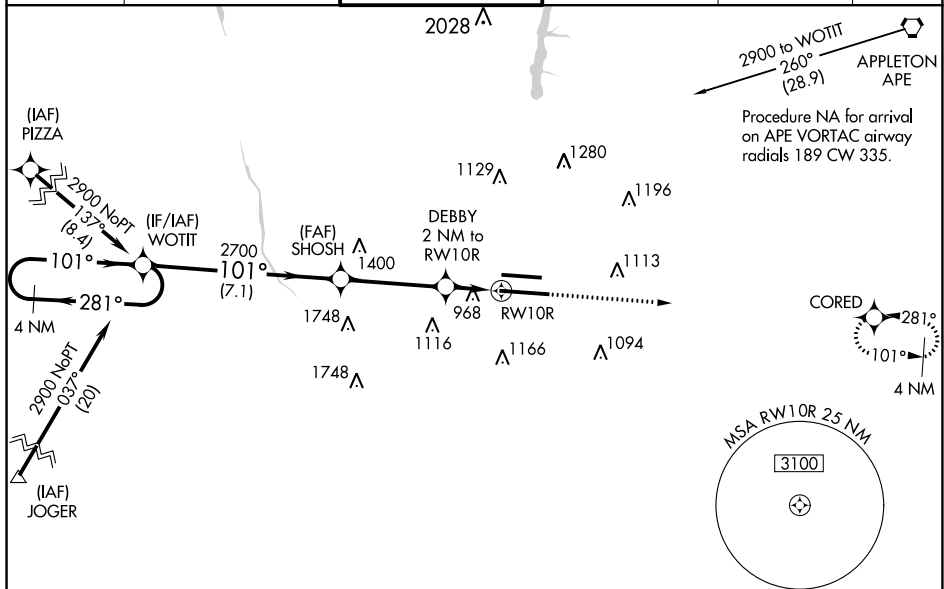
RNAV (GPS) Y RWY 10R
JOHN GLENN COLUMBUS INTL (CMH)

- T** For uncompensated Baro-VNAV systems, LNAV/VNAV NA below -18°C (0°F) or
A above 54°C (130°F). DME/DME RNP-0.3 NA. LNAV procedure NA during
simultaneous operations. Use of FD or AP providing RNAV track guidance required
during simultaneous operations. Simultaneous approach authorized.



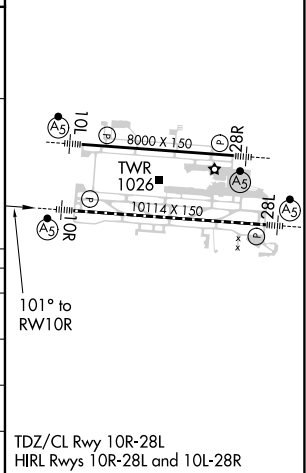
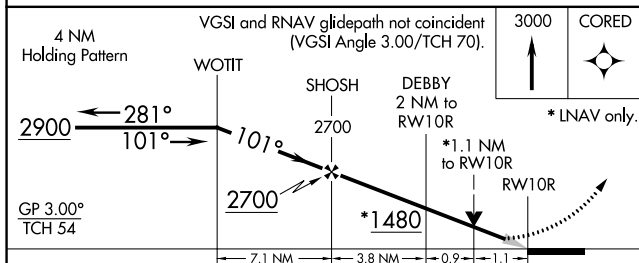
MISSED APPROACH:
Climb to 3000 direct
CORED and hold.

D-ATIS 124.6	COLUMBUS APP CON 125.95 371.975	COLUMBUS TOWER 132.7 257.8	GND CON 121.9 348.6	CLNC DEL 126.3	CPDLC
-----------------	------------------------------------	-------------------------------	------------------------	-------------------	-------



EC-2, 03 DEC 2020 to 31 DEC 2020

ELEV	815	D	TDZE	809
------	-----	----------	------	-----



CATEGORY		A	B	C	D
LPV	DA	1009/18 200 (200-½)			
INAV/ VNAV	DA	1273/55 464 (500-1)			
INAV	MDA	1220/24 411 (500-½)	1220/40 411 (500-¾)		
C CIRCLING		1340-1 525 (600-1)	1520-2 705 (800-2)	1540-2¼ 725 (800-2¼)	