

WAAS CH 86619 W28B	APP CRS 281°	Rwy Idg TDZE Apt Elev	8000 813 815
--	------------------------	-----------------------------	---


RNAV (GPS) Y RWY 28R

JOHN GLENN COLUMBUS INTL (CMH)

⚠

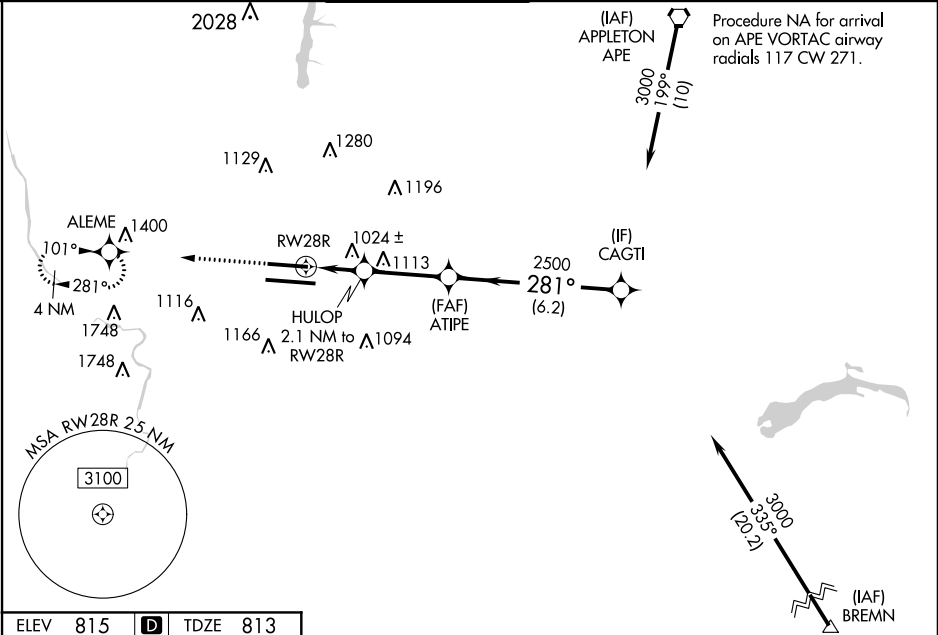
For uncompensated Baro-VNAV systems, LNAV/VNAV NA below -18°C (0°F) or above 54°C (130°F). Simultaneous approach authorized. DME/DME RNP-0.3 NA. LNAV procedure NA during simultaneous operations. Use of FD or AP providing RNAV track guidance required during simultaneous operations. For inoperative ALS, increase LNAV/VNAV all Cats visibility to RVR 4500; increase LNAV Cat C/D visibility to 1½ SM.

MALSR



MISSED APPROACH:
Climb to 2800 direct
ALEME and hold.


D-ATIS 124.6	COLUMBUS APP CON 125.95 371.975	COLUMBUS TOWER 132.7 257.8	GND CON 121.9 348.6	CLNC DEL 126.3	CPDLC
------------------------	---	--------------------------------------	-------------------------------	--------------------------	-------



ELEV 815 **D** TDZE 813

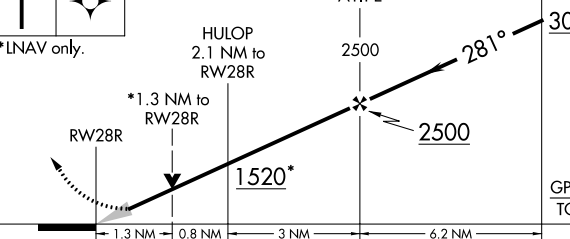
2800 ALEME

281° to RWY 28R



TDZ/CL Rwy 10R-28L
HIRL Rwy 10R-28L and 10L-28R

*LNAV only.



1.3 NM

0.8 NM

3 NM

6.2 NM

CATEGORY

A

B

C

D

LPV

DA

1018/24

205 (300-½)

LNAV/VNAV

DA

1122/24

309 (400-½)

LNAV

MDA

1280/24

467 (500-½)

1280/50

467 (500-1)

C CIRCLING

1340-1

525 (600-1)

1520-2

705 (800-2)

1520-2¼

705 (800-2¼)

COLUMBUS, OHIO
Amdt 2B 22JUN17

JOHN GLENN COLUMBUS INTL (CMH)

40°00'N-82°54'W

RNAV (GPS) Y RWY 28R

EC-2, 03 DEC 2020 to 31 DEC 2020

EC-2, 03 DEC 2020 to 31 DEC 2020