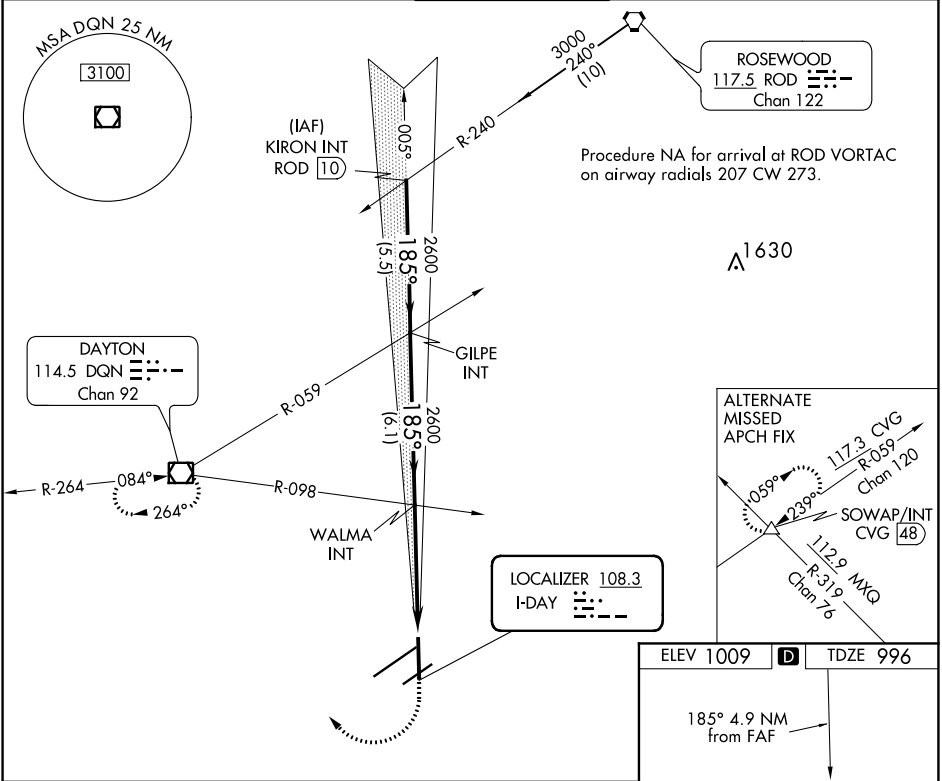


LOC I-DAY 108.3	APP CRS 185°	Rwy Idg TDZE Apt Elev 8502 996 1009
---------------------------	------------------------	---

ILS or LOC RWY 18
JAMES M COX DAYTON INTL (DAY)

<div><div>▼</div><div>For inop ALS, increase S-LOC 18 Cat C/D visibility to RVR 6000. ** RVR 1800 authorized with the use of FD or AP or HUD to DA.</div></div>	<div><div>MALSR</div><div></div></div>	<div><div>MISSED APPROACH: Climbing to 1400 then climbing right turn to 3100 direct DQN VOR/DME and hold.</div></div>
---	--	---

ATIS 125.8	COLUMBUS APP CON 118.425 323.15	DAYTON TOWER 119.9 257.7	GND CON 121.9	CINC DEL 121.75
----------------------	---	------------------------------------	-------------------------	---------------------------



<div><div>KIRON INT ROD [10]</div><div>GILPE INT</div><div>WALMA INT</div><div>1400 3100 DQN</div><div>3000 185° 2600 185° 2600</div><div>GS 3.00° TCH 55</div><div>5.5 NM 6.1 NM 4.9 NM</div></div>				
CATEGORY	A	B	C	D
S-ILS 18 **	1196/24 200 (200-½)			
S-LOC 18	1400/24	404 (400-½)	1400/40	404 (400-¾)
CIRCLING	1580-1	571 (600-1)	1580-1½ 571 (600-1½)	1640-2 631 (700-2)

ELEV 1009	TDZE 996
<div><div>185° 4.9 NM from FAF</div><div></div><div>TWR 1260</div><div>81 8000 1500 1150 800 36 241</div></div>	
HIRL all Rwys TDZ/CL Rwy 6L REIL Rwys 6R and 36 FAF to MAP 4.9 NM	
Knots	60 90 120 150 180
Min:Seq	4:54 3:16 2:27 1:58 1:38