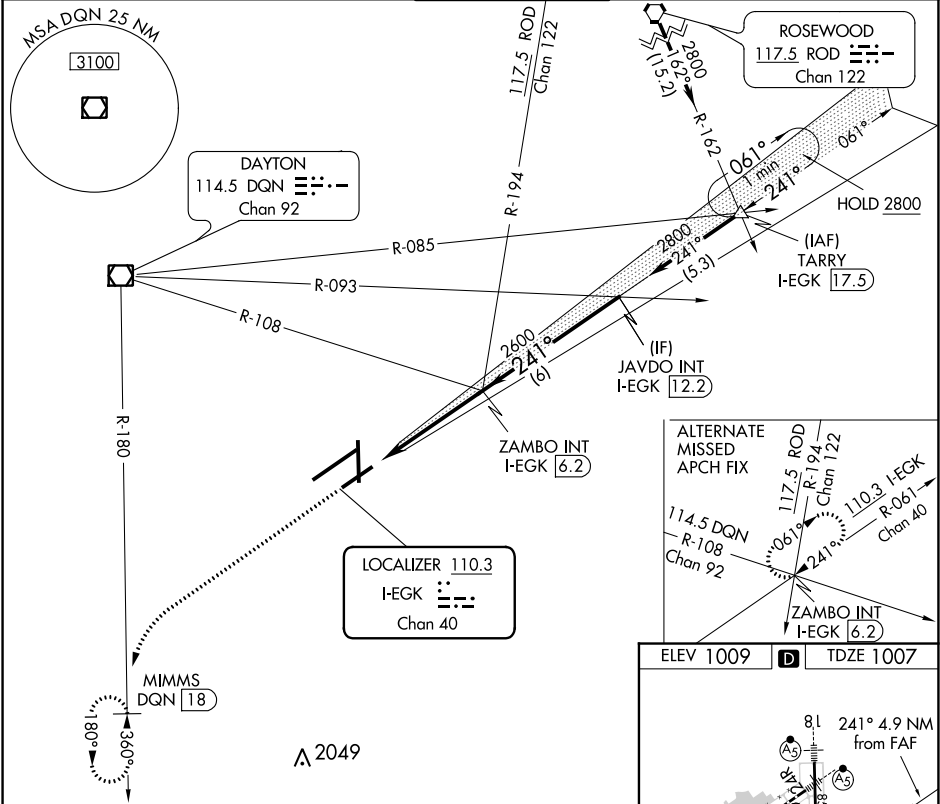


LOC I-EGK <b>110.3</b> Chan <b>40</b>	APP CRS <b>241°</b>	Rwy Idg TDZE Apt Elev <b>7001</b> <b>1007</b> <b>1009</b>
---------------------------------------------	------------------------	--------------------------------------------------------------------------

ILS or LOC RWY 24L  
JAMES M COX DAYTON INTL (DAY)

DME required.	MALSR	MISSED APPROACH: Climb to 3000 on heading 241° and DQN R-180 to MIMMS/DQN 18 DME and hold.
Simultaneous approach authorized. # RVR 1800 authorized with use of FD or AP or HUD to DA.		

ATIS <b>125.8</b>	COLUMBUS APP CON <b>118.425 323.15</b>	DAYTON TOWER <b>119.9 257.7</b>	GND CON <b>121.9</b>	CLNC DEL <b>121.75</b>
----------------------	-------------------------------------------	------------------------------------	-------------------------	---------------------------



3000	DQN R-180	MIMMS DQN 18	VGSI and ILS glidepath not coincident (VGSI Angle 3.00/TCH 54).		JAVDO INT I-EGK 12.2
hdg 241°			ZAMBO INT I-EGK 6.2		2800
*LOC only.		*I-EGK 2.6	2600		2600
GS 3.00° TCH 50					
1.2 NM 3.7 NM 6 NM					
CATEGORY	A	B	C	D	
S-ILS 24L #	1207/24		200 (200-½)		
S-LOC 24L	1440/24	433 (500-½)	1440/40	433 (500-¾)	
CIRCLING	1580-1	571 (600-1)	1580-1½ 571 (600-1½)	1640-2 631 (700-2)	

ELEV 1009	TDZE 1007
HIRL all Rwy	
TDZ/CL Rwy 6L	
REIL Rwy 6R and 36	
FAF to MAP 4.9 NM	
Knots	60 90 120 150 180
Min:Sec	4:54 3:16 2:27 1:58 1:38

EC-2, 03 DEC 2020 to 31 DEC 2020

EC-2, 03 DEC 2020 to 31 DEC 2020