
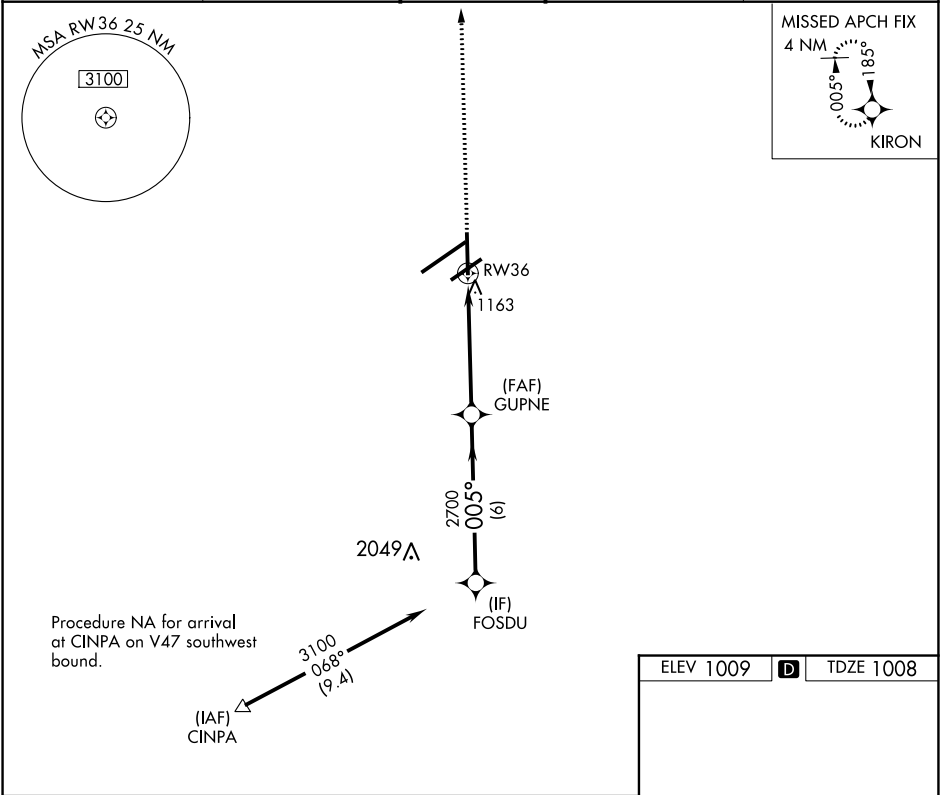


APP CRS	Rwy Idg	8502
005°	TDZE	1008
	Apt Elev	1009

RNAV (GPS) RWY 36  
JAMES M COX DAYTON INTL (DAY)

 For uncompensated Baro-VNAV systems, LNAV/VNAV NA below -19°C (-2°F) or above 54°C (130°F). DME/DME RNP-0.3 NA. Rwy 36 helicopter visibility reduction below ¾ SM NA.	MISSED APPROACH: Climb to 3000 direct to KIRON and hold.
--	--

ATIS 125.8	COLUMBUS APP CON 118.425 323.15	DAYTON TOWER 119.9 257.7	GND CON 121.9	CLNC DEL 121.75
---------------	------------------------------------	-----------------------------	------------------	--------------------



	FOSDU	GUPNE	3000	KIRON
	3100			
	GP 3.00°	2700	*1.4 NM to RW36	*LNAV only.
	TCH 60			
	6 NM	3.7 NM	1.4	
CATEGORY	A	B	C	D
LNAV/VNAV DA	1449-1½ 441 (500-1½)			
LNAV MDA	1500-1	492 (500-1)	1500-1¼ 492 (500-1¼)	1500-1½ 492 (500-1½)
CIRCLING	1580-1	571 (600-1)	1580-1½ 571 (600-1½)	1640-2 631 (700-2)

