

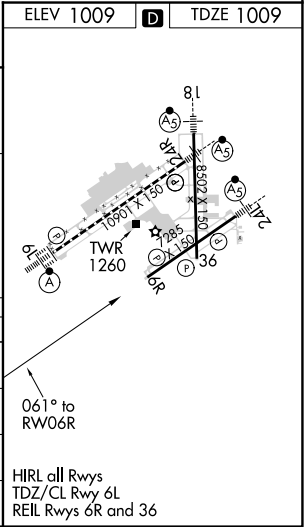
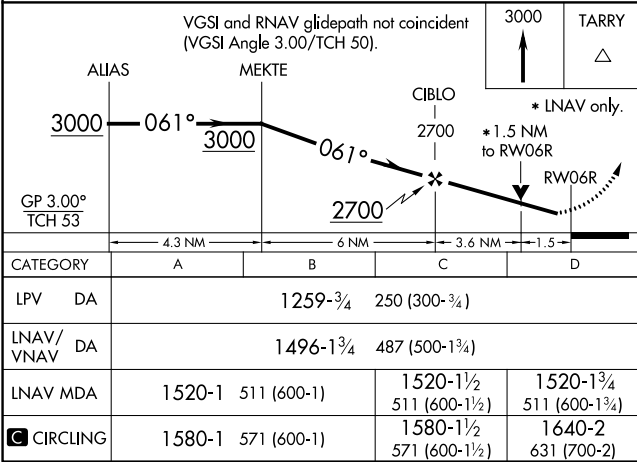
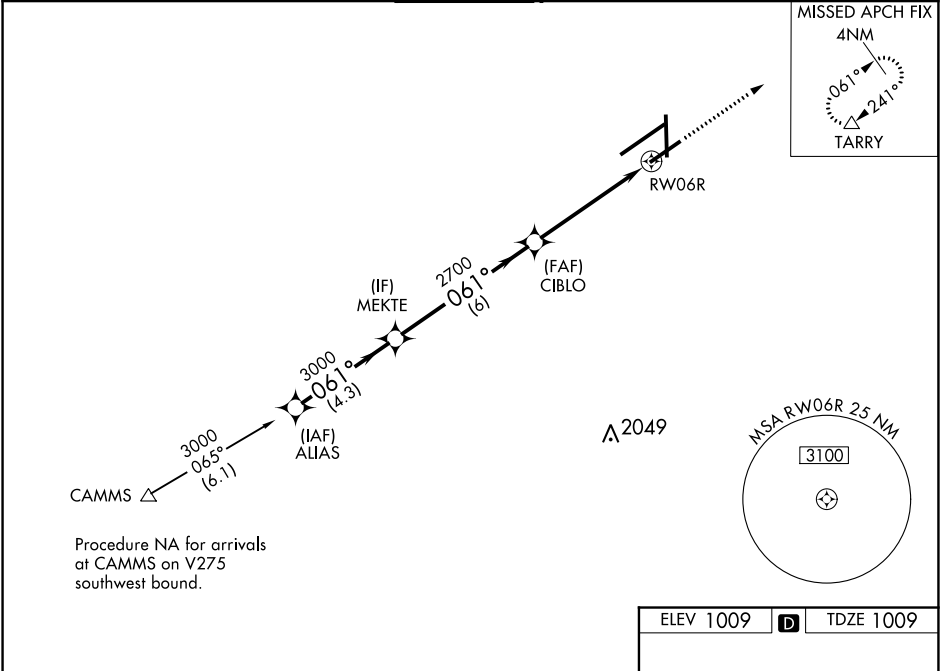
WAAS CH 90414 W06B	APP CRS 061°	Rwy Idg TDZE Apt Elev	7001 1009 1009
--	------------------------	-----------------------------	---

RNAV (GPS) RWY 6R
JAMES M COX DAYTON INTL (DAY)

⚠ For uncompensated Baro-VNAV systems, LNAV/VNAV NA below -19°C (-4°F) or above 54°C (130°F). Rwy 6R helicopter visibility reduction below ¾ SM NA. Simultaneous approach authorized. DME/DME RNP-0.3 NA. LNAV procedure NA during simultaneous operations. Use of FD or AP required during simultaneous operations.

MISSED APPROACH: Climb to 3000 direct TARRY and hold.

ATIS 125.8	COLUMBUS APP CON 118.425 323.15	DAYTON TOWER 119.9 257.7	GND CON 121.9	CLNC DEL 121.75
----------------------	---	------------------------------------	-------------------------	---------------------------



EC-2, 03 DEC 2020 to 31 DEC 2020

EC-2, 03 DEC 2020 to 31 DEC 2020