

APP CRS	Rwy Idg	10900
061°	TDZE	998
	Apt Elev	1009

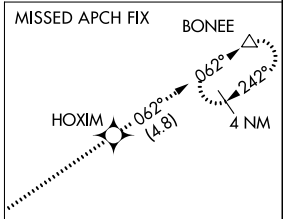
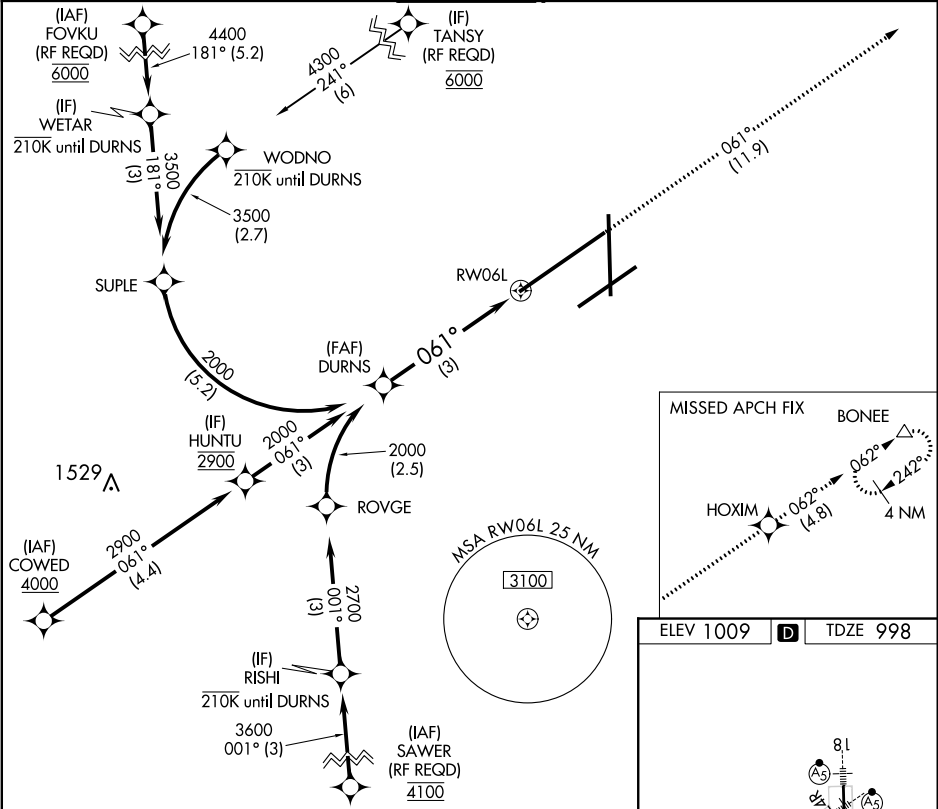
RNAV (RNP) Y RWY 6L  
JAMES M COX DAYTON INTL (DAY)

**T** GPS required. For uncompensated Baro-VNAV systems, procedure NA below -19°C (-2°F) or above 54°C (130°F). For inop ALS, increase RNP 0.10 all Cats visibility to RVR 6000. For inop ALS, increase RNP 0.30 all Cats visibility to 1 5/8.

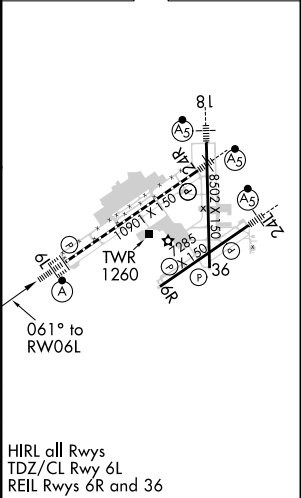
ALSF-2

MISSED APPROACH: Climb to 3000 on the RNAV missed approach route to BONEE and hold.

ATIS 125.8	COLUMBUS APP CON 118.425 323.15	DAYTON TOWER 119.9 257.7	GND CON 121.9	CLNC DEL 121.75
---------------	------------------------------------	-----------------------------	------------------	--------------------



ELEV 1009	D	TDZE 998
-----------	---	----------



VGSI and RNAV glidepath not coincident DURNS (VGSI Angle 3.00/TCH 67).

2000 GP 3.00° TCH 51

See planview for multiple IF locations.

3000 HOXIM BONEE

↑ tr 062° △

RW06L

CATEGORY	A	B	C	D
RNP 0.10 DA		1358/40	360 (400-3/4)	
RNP 0.30 DA		1464/60	466 (500-1 1/4)	

**AUTHORIZATION REQUIRED**

EC-2, 03 DEC 2020 to 31 DEC 2020

EC-2, 03 DEC 2020 to 31 DEC 2020