

DAYTON, OHIO

RNAV (GPS) RWY 23R

APCH CRS	Rwy Idg	12,600
233°	TDZE	823
	Arpt Elev	823

AL-108 (USAF)

WRIGHT PATTERSON AFB (KFFO)

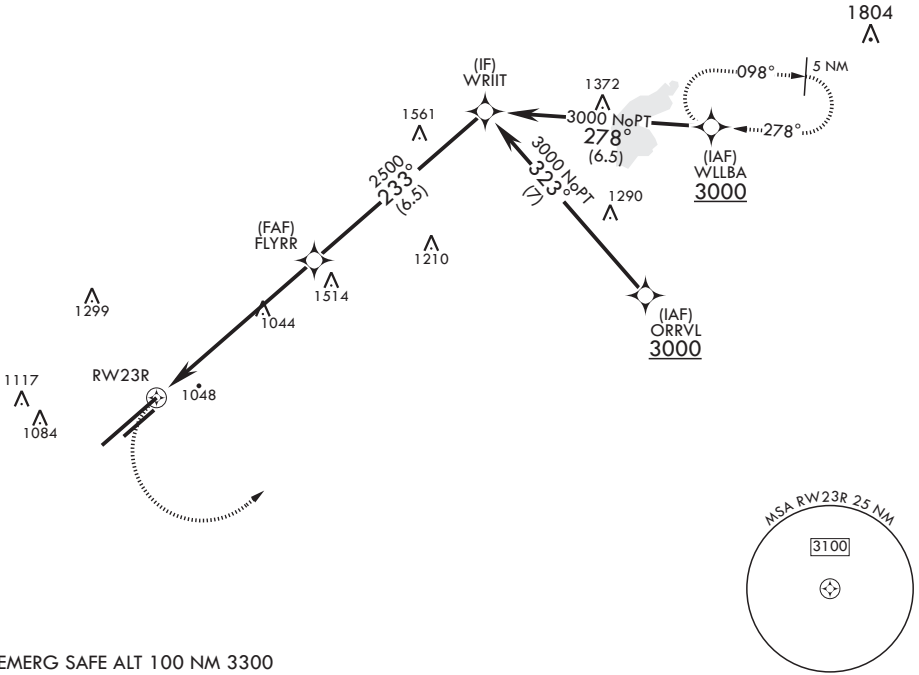
▼ * When ALS inop, increase CAT AB RVR to 55, vis to 1 mile; CAT CD vis to 1 3/8 miles.
** When Rwy 23R VGSi inop, circling to Rwy 23R NA at night.

ALSF-1

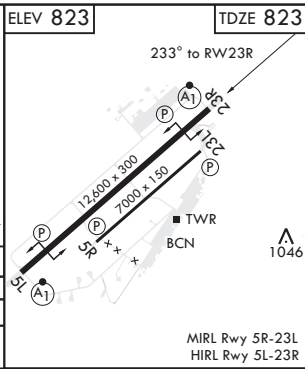
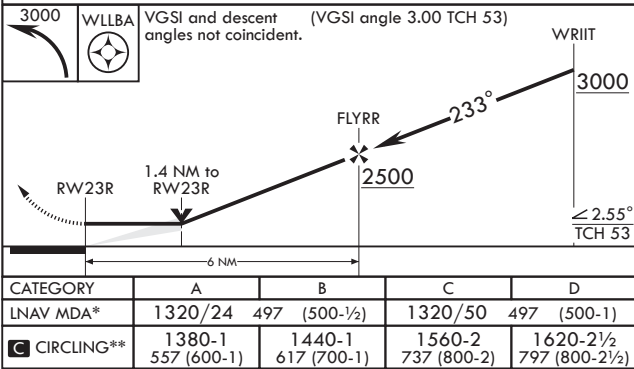
MISSED APPROACH: Turn left climb to 3000 direct WLLBA waypoint and hold.

ATIS 124.475 269.9	COLUMBUS APP CON/DEP CON 118.85 269.275	PATTERSON TOWER 126.9 281.45	GND CON 121.8 335.8
-----------------------	--	---------------------------------	------------------------

DME/DME RNP-0.3 NA



EMERG SAFE ALT 100 NM 3300



DAYTON, OHIO

39°50'N - 84°03'W

WRIGHT PATTERSON AFB (KFFO)

Amdt 5 13OCT16

RNAV (GPS) RWY 23R

EC-2, 03 DEC 2020 to 31 DEC 2020

EC-2, 03 DEC 2020 to 31 DEC 2020