

DAYTON, OHIO

TACAN RWY 23R

TACAN FFO Chan <b>99</b>	APCH CRS <b>230°</b>	Rwy Idg <b>12,600</b> THRE <b>823</b> Arpt Elev <b>823</b>
-----------------------------	-------------------------	------------------------------------------------------------------

AL-108 [USAF]

WRIGHT-PATTERSON AFB (KFFO)

**T** \* When ALS inop, increase CAT AB RVR to 55 and vis to 1 mile. CAT CDE vis to 1½ miles.

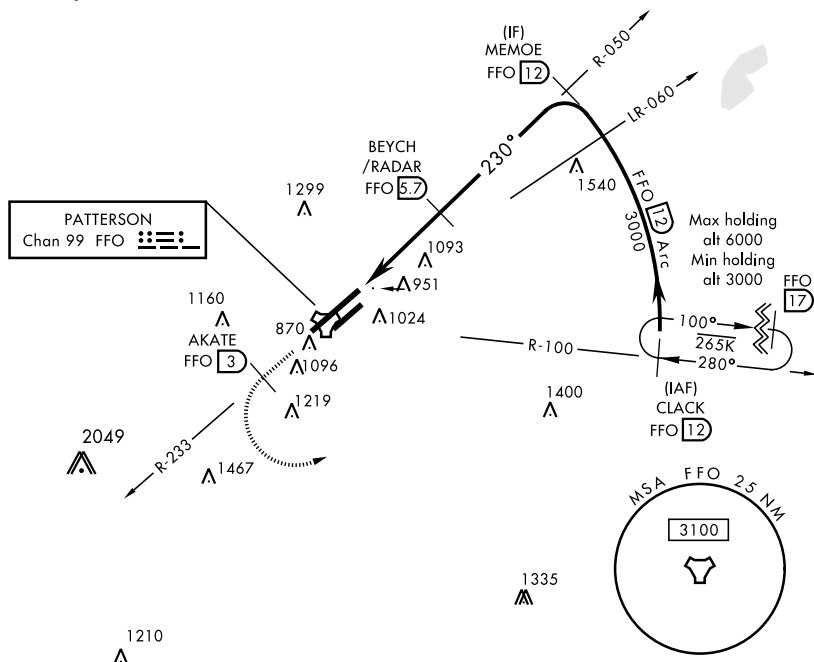
ALSF-1

† MISSED APPROACH: Climb to 2000 via FFO R-233, at 3 DME turn left direct CLACK climbing to 3000 and hold.

ATIS 124.475 269.9	COLUMBUS APP CON 118.85 269.275	PATTERSON TOWER 126.9 281.45	GND CON 121.8 335.8
-----------------------	------------------------------------	---------------------------------	------------------------

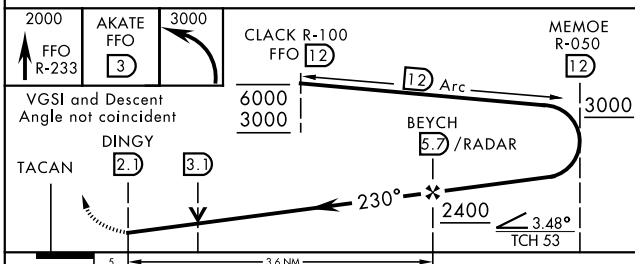
\*\* When Rwy 23R VGSI inop, circling to Rwy 23R NA at night.

† Missed approach requires use of RNAV or ATC radar monitoring.

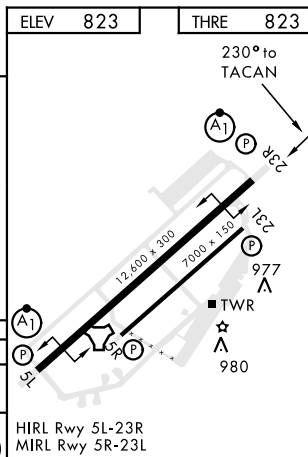


EC-2, 03 DEC 2020 to 31 DEC 2020

EMERG SAFE ALT 100 NM 3700



CATEGORY	A	B	C	D	E
S-23R *	1360/24 537 (600-1/4)	1360/55 537 (600-1)			
<b>C</b> CIRCLING **	1380-1 557 (600-1)	1440-1 617 (700-1)	1560-2 737 (800-2)	1620-2 1/2 797 (800-2 1/2)	1620-2 3/4 797 (800-2 3/4)

DAYTON, OHIO  
Amdt 6 30APR15

39° 50'N-84° 03'W

WRIGHT-PATTERSON AFB (KFFO)

## TACAN RWY 23R