

TACAN RWY 5L

TACAN FFO  
Chan 99

APCH CRS  
059°

Rwy ldg 12,600  
TDZE 803  
Arpt Elev 823

AL-108 [USAF]

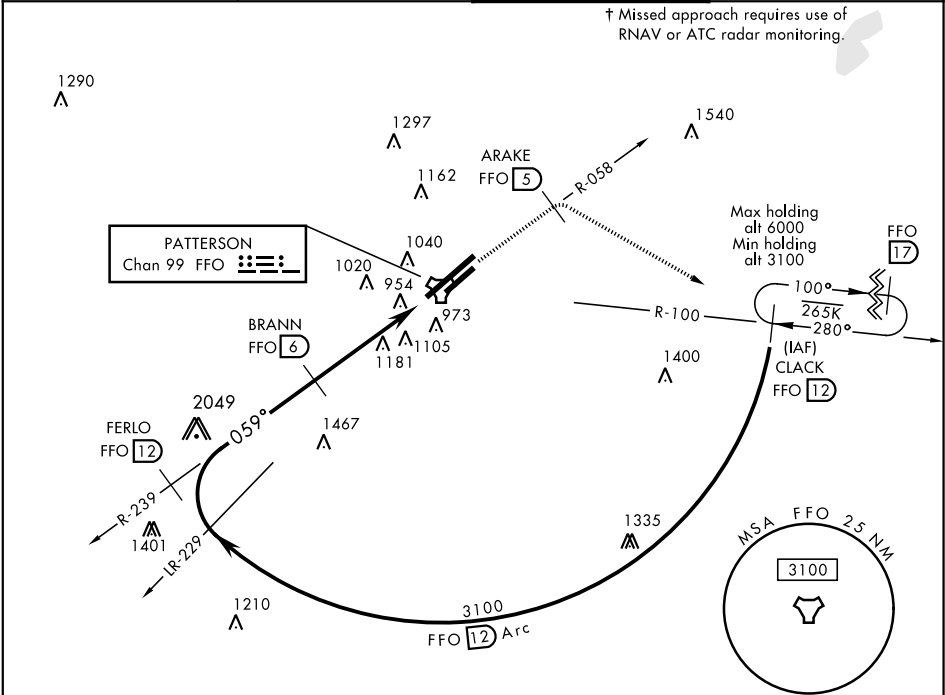
WRIGHT-PATTERSON AFB (KFFO)

⚠ \* When ALS inop, increase RVR CAT AB to 55 and vis to 1 mile, CAT CDE vis to 1¼ miles.  
\*\* When Rwy 23R VGSI inop, circling to Rwy 23R NA at night.

ALSF-1  
A1

† MISSED APPROACH: Climb to 2000 via FFO R-058 to 5 DME, turn right direct CLACK climbing to 3100 and hold.

ATIS 124.475 269.9	COLUMBUS APP CON 118.85 269.275	PATTERSON TOWER 126.9 281.45	GND CON 121.8 335.8
-----------------------	------------------------------------	---------------------------------	------------------------



EMERG SAFE ALT 100 NM 3700

2000  
↑ FFO R-058

ARAKE FFO 5

3100  
CLACK FFO 12

ELEV 823

TDZE 803

The arrival chart shows the following details:

- Routes:** R-239, R-100, and a 059° approach to TACAN.
- Altitudes:** 3100, 2600, 6000, and 3100.
- Procedures:** A procedure for BRANN to RW5L is shown with a 3.00° TCH 51.
- Other:** A note indicates that a missed approach requires the use of RNAV or ATC radar monitoring.

CATEGORY	A	B	C	D	E
S-5L *	1400/24	597 (600-½)	1400-1¼	597 (600-1¼)	
CIRCLING **	1400-1 577 (600-1)	1440-1 617 (700-1)	1560-2 737 (800-2)	1620-2½ 797 (800-2½)	1620-2¾ 797 (800-2¾)

DAYTON, OHIO  
Amdt 7 05JAN17

39° 50' N-84° 03' W

WRIGHT-PATTERSON AFB (KFFO)

TACAN RWY 5L