

TACAN RWY 5R

TACAN FFO	APCH CRS	Rwy Idg	7000
Chan 99	048°	THRE	807
		Arpt Elev	823

AL-108 [USAF]

WRIGHT-PATTERSON AFB (KFFO)

T * When Rwy 23R VGSI inop, circling to Rwy 23R NA at night.

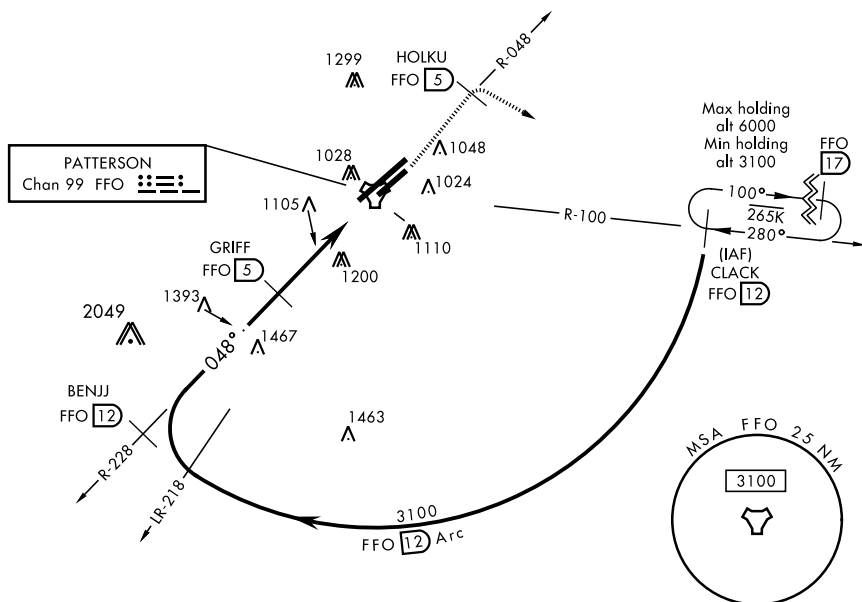
MISSED APPROACH: Climb to 2000 via FFO R-048 to HOLKU, turn right direct CLACK climbing to 3100 and hold.

ATIS
124.475 269.9

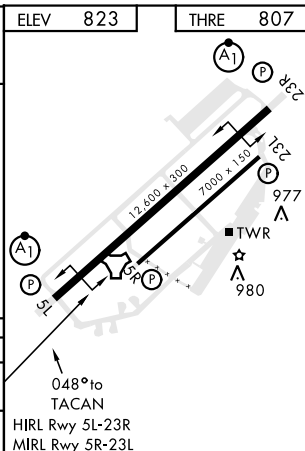
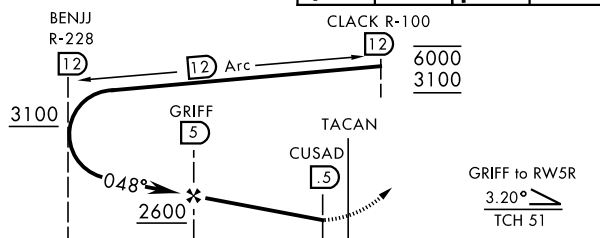
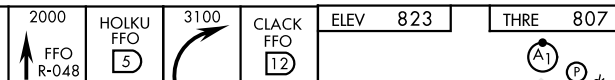
COLUMBUS APP CON
118.85 269.275

PATTERSON TOWER
126.9 281.45

GND CON
121.8 335.8



EMERG SAFE ALT 100 NM 3700



CATEGORY	A	B	C	D	E
S-5R	1500-1	687 (700-1)	1500-2 687 (700-2)		
CIRCLING*	1500-1	677 (700-1)	1560-2 737 (800-2)	1620-2½ 797 (800-2½)	1620-2¾ 797 (800-2¾)

DAYTON, OHIO
Amdt 5 05JAN17

39° 50' N-84° 03' W

WRIGHT-PATTERSON AFB (KFFO)

TACAN RWY 5R

EC-2, 03 DEC 2020 to 31 DEC 2020