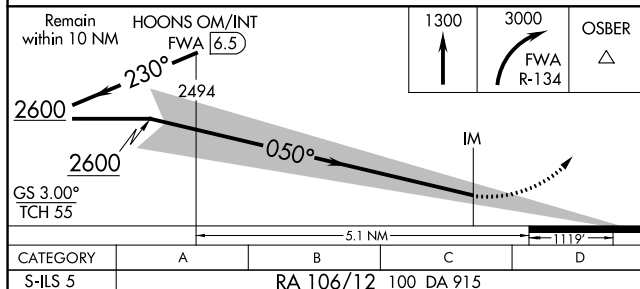
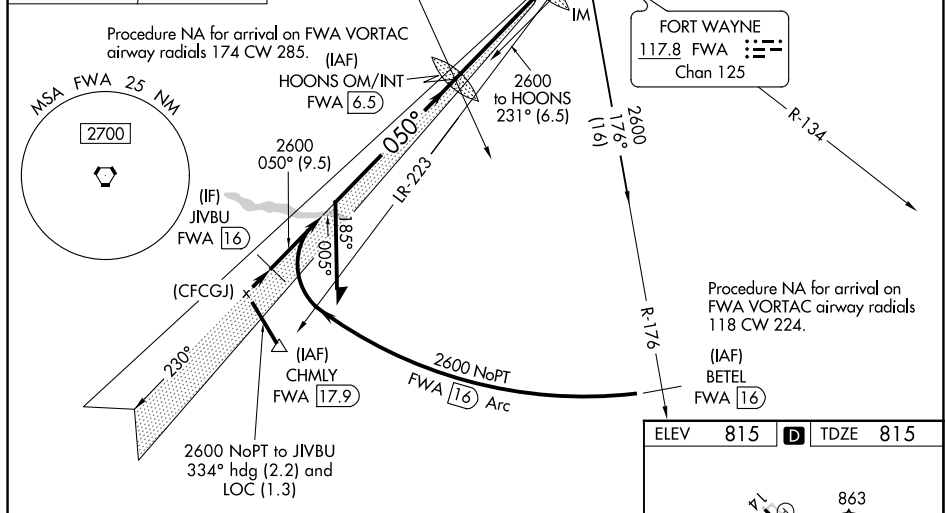
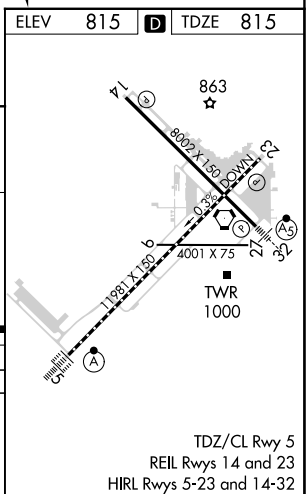


**ILS RWY 5 (CAT II)**  
FORT WAYNE INTL (FWA)

**MISSED APPROACH:** Climb to 1300 then climbing right turn to 3000 on FWA R-134 to OSBER INT/FWA 22 DME and hold.



CATEGORY II ILS - SPECIAL AIRCREW  
& AIRCRAFT CERTIFICATION REQUIRED



EC-2, 03 DEC 2020 to 31 DEC 2020