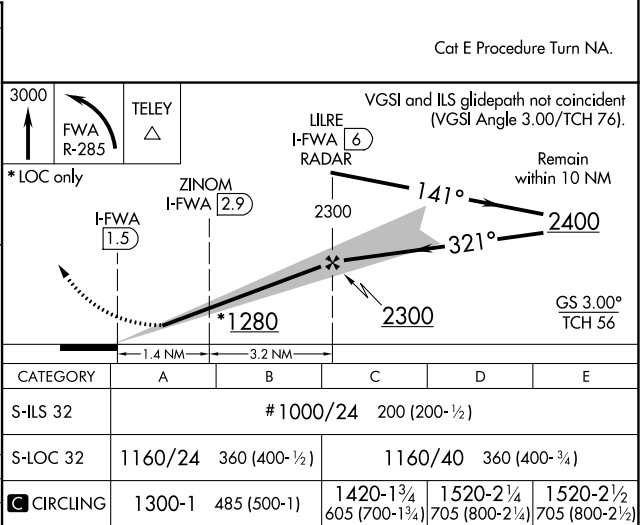
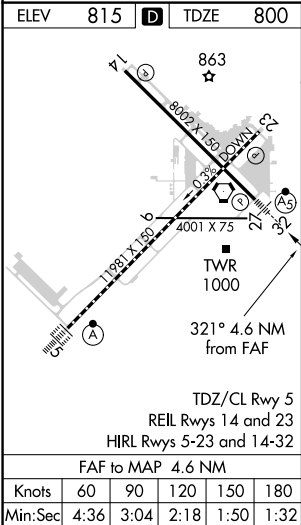
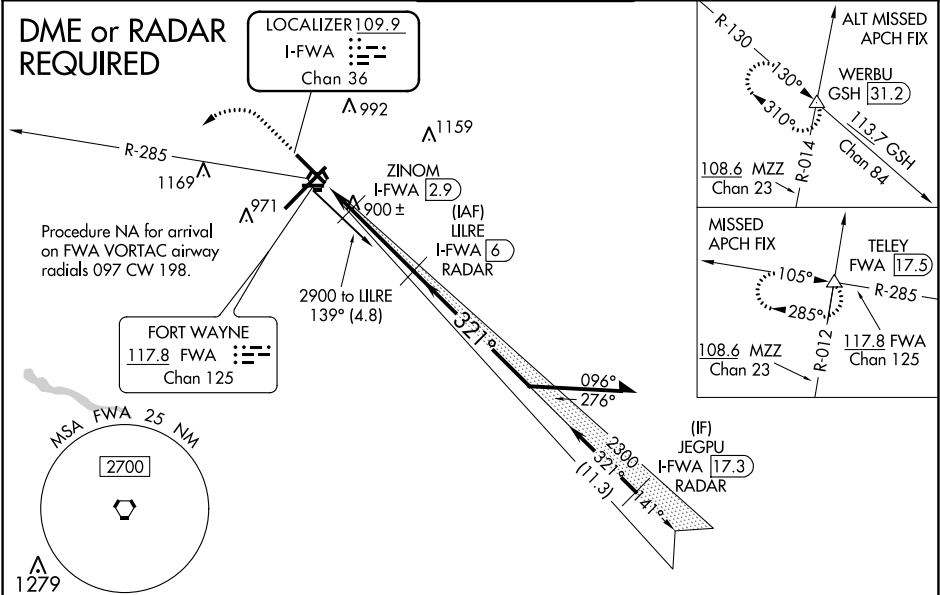


|   |                        |  |
|---|------------------------|--|
| LOC/DME I-FWA<br><b>109.9</b><br>Chan <b>36</b> | APP CRS<br><b>321°</b> | Rwy Idg<br>TDZE<br>Apt Elev<br><b>8001</b><br><b>800</b><br><b>815</b> |
|---|------------------------|--|

ILS or LOC RWY 32  
FORT WAYNE INTL (FWA)

|   |  |                                   |   |   |                    |
|---|--|-----------------------------------|---|---|--------------------|
| DME required for LOC only. DME or RADAR required for procedure entry.   |  |                                   | MALSR   | MISSED APPROACH: Climb to 3000 then left turn on FWA VORTAC R-285 to TELEY INT/FWA 17.5 DME and hold. |                    |
| <div><div><div><div><div></div><div></div></div><div><div></div><div></div></div></div><div><div></div><div></div></div></div></div> <div>ASR</div> | For inop ALS, increase S-ILS 32 Cat E visibility to RVR 4000, S-LOC 32 Cat E visibility to RVR 6000. Use I-FWA DME when on the localizer course.<br># RVR 1800 authorized with use of FD or AP or HUD to DA. |                                   | <div><div><div><div></div><div></div></div><div><div></div><div></div></div></div><div><div></div><div></div></div></div> |   |                    |
| ATIS<br>121.25 360.825  | FORT WAYNE APP CON<br>127.2 284.6  | FORT WAYNE TOWER<br>119.1 269.325 | GND CON<br>121.9 348.6  |   | CLNC DEL<br>124.75 |



EC-2, 03 DEC 2020 to 31 DEC 2020

EC-2, 03 DEC 2020 to 31 DEC 2020