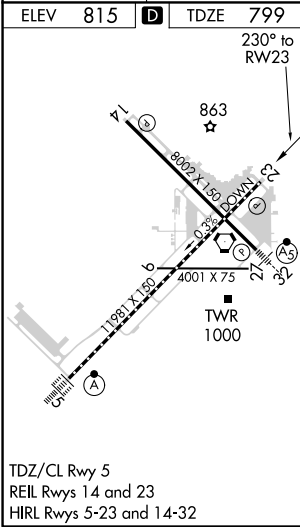
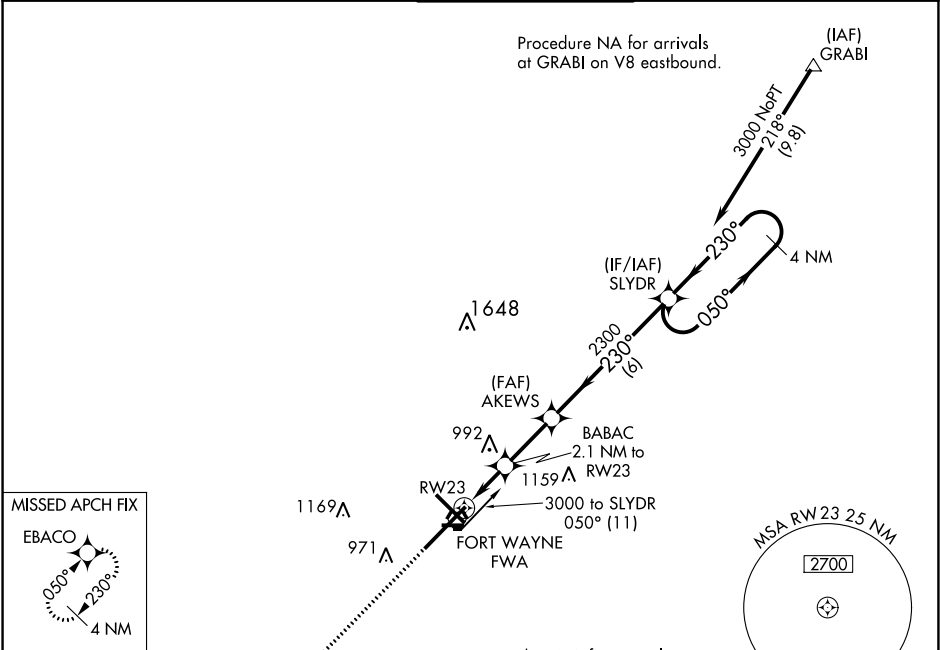


WAAS CH <b>69599</b> <b>W23A</b>	APP CRS <b>230°</b>	Rwy Idg <b>11981</b> TDZE <b>799</b> Apt Elev <b>815</b>
--	------------------------	--

RNAV (GPS) RWY 23

FORT WAYNE INTL (FWA)

<div><div><div></div><div>ASR</div></div><div>For uncompensated Baro-VNAV systems, LNAV/VNAV NA below -16°C (4°F) or above 47°C (116°F). DME/DME RNP-0.3 NA.</div></div>			MISSED APPROACH: Climb to 3000 direct EBACO and hold.	
ATIS <b>121.25 360.825</b>	FORT WAYNE APP CON <b>127.2 284.6</b>	FORT WAYNE TOWER <b>119.1 269.325</b>	GND CON <b>121.9 348.6</b>	CLNC DEL <b>124.75</b>



<div>Procedure NA for arrival on FWA VORTAC airway radials 335 CW 134.</div> <div><div><div><div>3000</div><div>EBACO</div></div><div><div>VGSI and RNAV glidepath not coincident (VGSI Angle 3.00/TCH 76).</div><div><div>BABAC 2.1 NM to RW23</div><div>AKEWS 2300</div><div>SLYDR 3000</div></div><div><div>*LNAV only.</div><div><div><div>RW23</div><div>1.3</div><div>0.8</div><div>2.4 NM</div><div>6 NM</div></div><div><div>*1520</div><div>2300</div></div></div><div><div>GP 3.00°</div><div>TCH 55</div></div></div></div><div><div>4 NM Holding Pattern</div><div>050°→</div><div>←230°</div></div></div></div>					
CATEGORY	A	B	C	D	E
LPV DA	1053/40 254 (300-¾)				
LNAV/VNAV DA	1230-1⅜ 431 (500-1⅝)				
LNAV MDA	1300/55 501 (500-1)		1300-1⅜ 501 (500-1⅝)		
<b>C</b> CIRCLING	1300-1 485 (500-1)		1420-1¾ 605 (700-1¾)	1520-2¼ 705 (800-2¼)	1520-2½ 705 (800-2½)

EC-2, 03 DEC 2020 to 31 DEC 2020

EC-2, 03 DEC 2020 to 31 DEC 2020