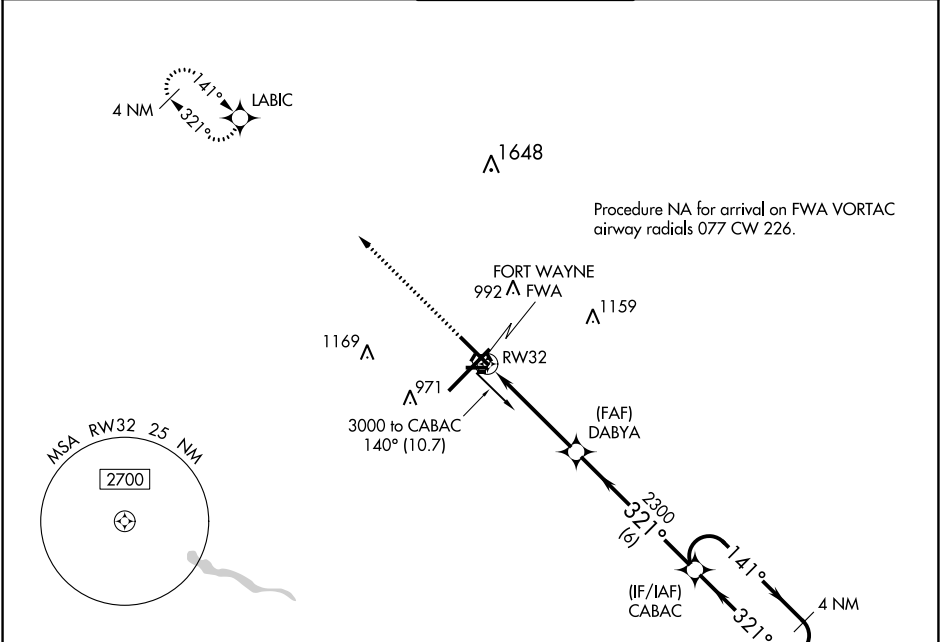


WAAS CH <b>82417</b> <b>W32A</b>	APP CRS <b>321°</b>	Rwy Idg TDZE Apt Elev	<b>8001</b> <b>800</b> <b>815</b>
--	------------------------	-----------------------------	---

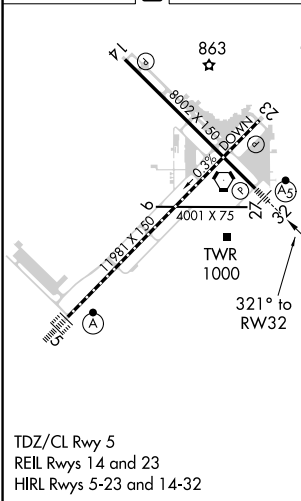
RNAV (GPS) RWY 32



FORT WAYNE INTL (FWA)

<div><div><div><div>⚠</div><div>ASR</div></div><div>For uncompensated Baro-VNAV systems, LNAV/VNAV NA below -16°C (4°F) or above 47°C (116°F). DME/DME RNP-0.3 NA. ** RVR 1800 authorized with use of FD or AP or HUD to DA.</div></div></div>	<div><div><div>MALSR</div><div><div><div>AS</div><div><div></div><div></div><div></div></div></div></div></div><div>MISSED APPROACH: Climb to 3000 direct LABIC and hold.</div></div>			
ATIS <b>121.25 360.825</b>	FORT WAYNE APP CON <b>127.2 284.6</b>	FORT WAYNE TOWER <b>119.1 269.325</b>	GND CON <b>121.9 348.6</b>	CLNC DEL <b>124.75</b>



ELEV	815	<b>D</b>	TDZE	800
------	-----	----------	------	-----



3000		LABIC		VGSI and RNAV glidepath not coincident (VGSI Angle 3.00/TCH 76).			
				4 NM Holding Pattern			
* LNAV only		* 1.3 NM to RW32		DABYA			