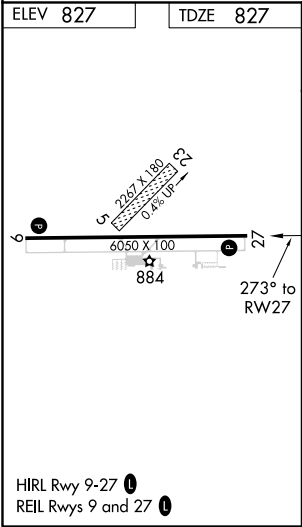
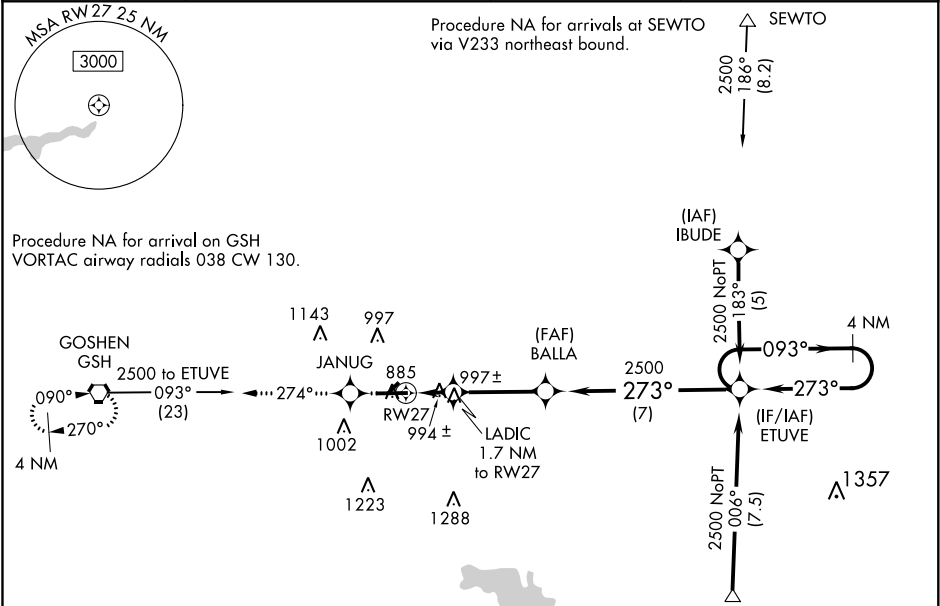


WAAS CH <b>97606</b> <b>W27A</b>	APP CRS <b>273°</b>	Rwy Idg TDZE Apt Elev	<b>6050</b> <b>827</b> <b>827</b>
--	------------------------	-----------------------------	---

RNAV (GPS) RWY 27  
GOSHEN MUNI (GSH)

RNP APCH.			MISSED APPROACH: Climb to 2500 direct JANUG and on 274° track to GSH VORTAC and hold.	
<div><div>▼</div><div>▲</div></div>	Baro-VNAV NA when using Warsaw Muni altimeter setting. For uncompensated Baro-VNAV systems, LNAV/VNAV NA below -16°C or above 47°C. When local altimeter setting not received, use Warsaw Muni altimeter setting and increase all DAs/MDAs 40 feet, and increase LPV all Cats visibility ¼ mile. Circling NA to Rwy's 5 and 23. Rwy 27 helicopter visibility reduction below ¾ SM NA.			
ASOS 121.45	SOUTH BEND APP CON ★ 132.05 257.8	CLNC DEL 125.25	UNICOM 123.05 (CTAF) 0	



2500	JANUG	GSH	VGSI and RNAV glidepath not coincident (VGSI Angle 3.00/TCH 51).	
2500	tr 274°		BALLA	ETUVE
*LNAV only.		LADIC 1.7 NM to RW27	2500	093° → 2500
RW27		1400*	2500	GS 3.00° TCH 56
1.7		3.3 NM	7 NM	
CATEGORY	A	B	C	D
LPV DA	1120-1 293 (300-1)			
LNAV/DA	1307-1¼ 480 (500-1¼)			
LNAV MDA	1260-1	433 (500-1)	1260-1¼ 433 (500-1¼)	1260-1½ 433 (500-1½)
CIRCLING	1300-1	473 (500-1)	1300-1½ 473 (500-1½)	1380-2 553 (600-2)