

TOLEDO, OHIO

AL-184 (FAA)

20310

WAAS CH 48899 W25A	APP CRS 252°	Rwy Idg 10600 TDZE 678 Apt Elev 683
--	------------------------	--

RNAV (GPS) RWY 25
EUGENE F KRANZ TOLEDO EXPRESS (TOL)

RNP APCH.

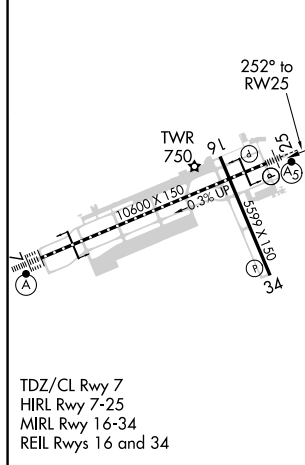
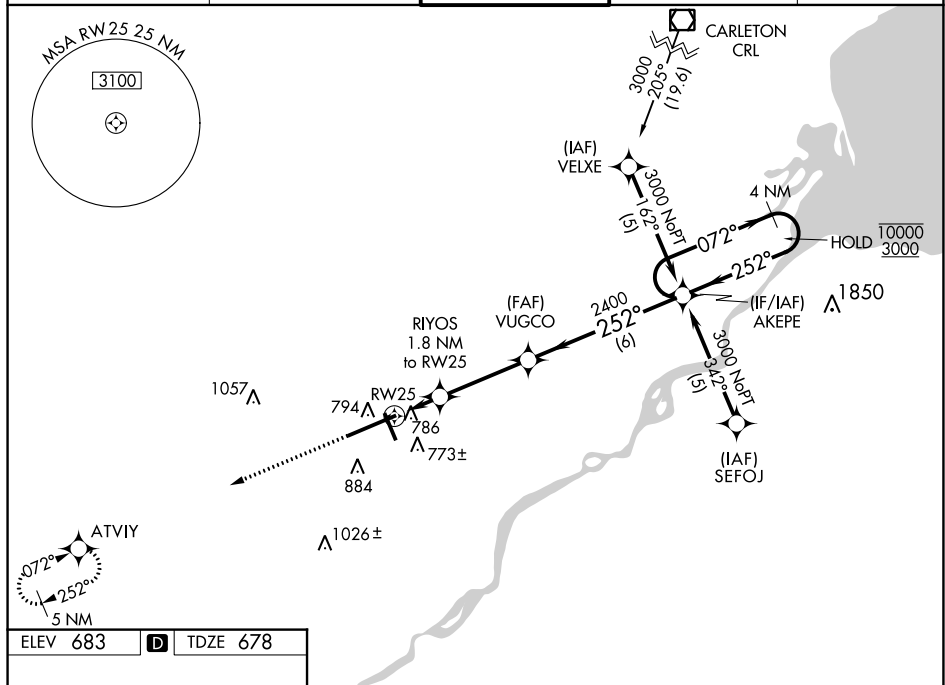
T For uncompensated Baro-VNAV systems, LNAV/VNAV NA below -17°C or above 52°C. For inoperative ALS, increase LPV Cat E visibility to RVR 4000, LNAV/VNAV Cat E visibility to 1/2 SM, LNAV Cat D/E visibility to RVR 6000.
A ** RVR 1800 authorized with the use of FD or AP or H/D to DA.
ASR

MALSR



MISSED APPROACH:
Climb to 3000 direct
ATVIY and hold.

ATIS	TOLEDO APP CON	TOLEDO TOWER	GND CON	CLNC DEL
118.75 290.225	134.35 317.55	118.1 285.4	121.9 348.6	121.75 348.6



<div style="display: flex; align-items: center;"> <div style="margin-right: 10px;"> <div style="border: 1px solid black; padding: 5px; text-align: center;">3000</div> <div style="border: 1px solid black; padding: 5px; text-align: center;">↑</div> </div> <div style="border: 1px solid black; padding: 5px; text-align: center;">ATVY</div> </div>		VGS1 and RNAV glidepath not coincident (VGS1 Angle 3.00/TCH 69°).		4 NM Holding Pattern	
*LNAV only.					
CATEGORY		A B C D E			
LPV DA**		878/24 200 (200-½)			
LNAV/VNAV DA		1065/50 387 (400-1)			
LNAV MDA		1040/24 362 (400-½)		1040/50 362 (400-1)	
C CIRCLING		1200-1 517 (600-1)		<div style="display: flex; justify-content: space-around;"> <div> 1300-1¾ 617 (700-1¾) </div> <div> 1360-2¼ 677 (700-2¼) </div> <div> 1360-2½ 677 (700-2½) </div> </div>	

TOLEDO, OHIO

Amdt 2D 05NOV20

EUGENE F KRANZ TOLEDO EXPRESS (TOL)

41°35'N-83°48'W

RNAV (GPS) RWY 25

EC-2, 03 DEC 2020 to 31 DEC 2020

EC-2, 03 DEC 2020 to 31 DEC 2020