

ILS RWY 5L (SA CAT I)
INDIANAPOLIS INTL (IND)

MISSED APPROACH: Climb to 1700 then climbing left turn to 3000 direct VHP VORTAC then on VHP VORTAC R-303 to KEADY/VHP 4.9 DME/RADAR and hold.

MISSED APCH FIX

R-303 123° 303°

116.3 VHP Chan 110

KEADY VHP 4.9 RADAR

OINK INT I-IND 6.1 RADAR

STDUM I-IND 9 RADAR

(IF) FTBL I-IND 12.1 RADAR

(IAF) WAAYN I-IND 15.2 RADAR 210K

5000 to WAAYN 004° (0.9) and LOC (10.1)

(IAF) KELLY (CFVDC) VHP 27.9

230°

RADAR or DME REQUIRED

MSA VHP 25 NM 3100


115.3 TTH R-077 Chan 100 CLOTT TTH 23.3 RADAR

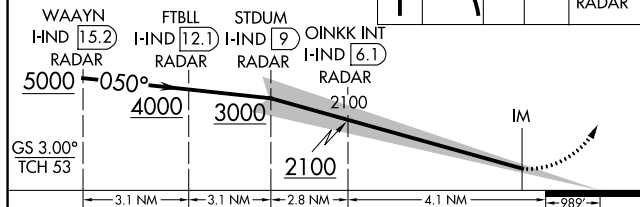
ALTERNATE MISSED APCH FIX

115.3 TTH R-077 Chan 100 CLOTT TTH 23.3 RADAR

Procedure NA for arrivals at KELLY on V11 southwest bound and V12 westbound.

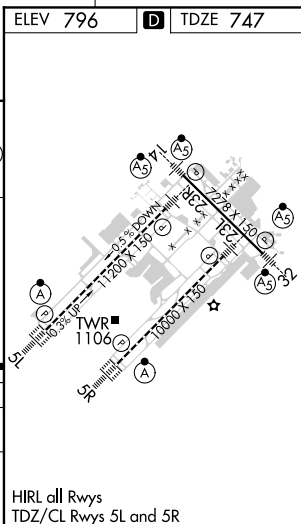
ELEV 796 TDZE 747

1700	3000	VHP 	VHP R-303	KEADY VHP 4.9 RADAR
------	------	--------------------------------------------------------------------------------------------	--------------	---------------------------



CATEGORY	A	B	C	D
S-ILS 5L	RA 178/14 150 DA 897			

SA CATEGORY I ILS - SPECIAL AIRCREW
& AIRCRAFT CERTIFICATION REQUIRED



EC-2. 03 DEC 2020 to 31 DEC 2020