

APP CRS	Rwy Idg	11200
050°	TDZE	747
	Apt Elev	796

RNAV (RNP) Z RWY 5L
INDIANAPOLIS INTL (IND)

T

For uncompensated Baro-VNAV systems, procedure NA below -18°C (0°F) or above 54°C (130°F). GPS required. For inop ALS, increase RNP 0.30 all Cats visibility to 1½ SM. Simultaneous approach authorized.

ALSF-2



MISSED APPROACH:
Climbing left turn to
3000 direct KEADY
and hold.

D-ATIS
134.25

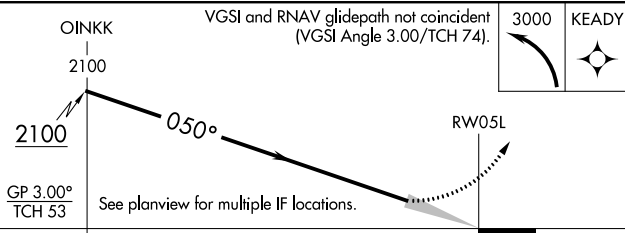
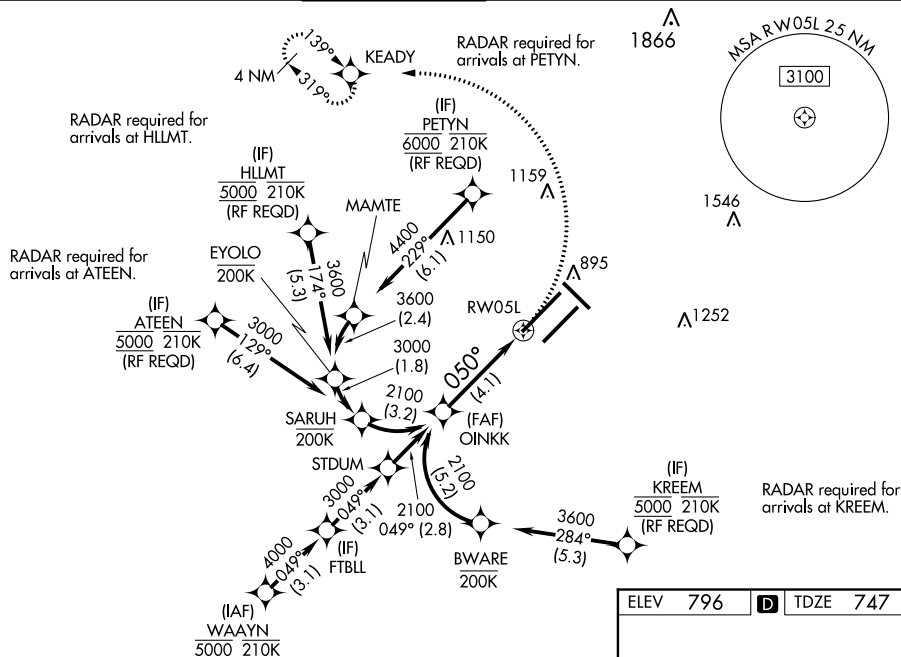
INDIANAPOLIS APP CON
128.175 317.8

INDY TOWER
120.9 257.8

GND CON
121.9

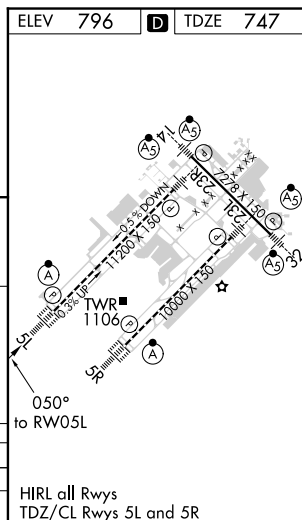
CLNC DEL
128.75 257.8

CPDLC



CATEGORY	A	B	C	D
RNP 0.30 DA		1197/60	450 (500-1¼)	

AUTHORIZATION REQUIRED



RNAV (RNP) Z RWY 5L