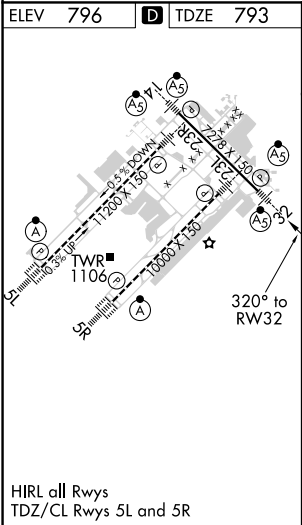
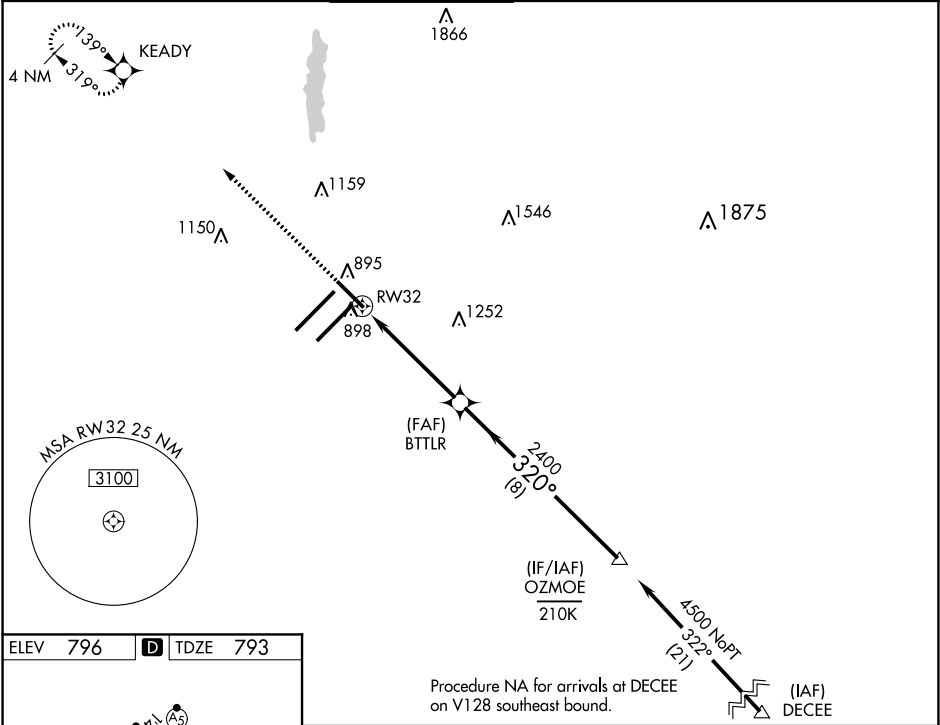


WAAS CH 62802 W32A	APP CRS 320°	Rwy Idg TDZE 793 Apt Elev 796
--	------------------------	---

RNAV (GPS) Y RWY 32

INDIANAPOLIS INTL (IND)

<div><div>⚠</div><div>For uncompensated Baro-VNAV systems, LNAV/VNAV NA below -18°C (0°F) or above 54°C (130°F). DME/DME RNP-0.3 NA. **RVR 1800 authorized with use of FD or AP or HUD to DA.</div></div>			<div>MALSR</div> <div></div>	MISSED APPROACH: Climb to 3000 direct KEADY and hold.	
D-ATIS 134.25	INDIANAPOLIS APP CON 128.175 317.8	INDY TOWER 120.9 257.8	GND CON 121.9	CLNC DEL 128.75 257.8	CPDLC



3000 KEADY		VGSI and RNAV glidepath not coincident (VGSI Angle 3.00/TCH 73).		OZMOE	
*LNAV only		*1 NM to RW32		4500	
BTTLR 2400		320°		GP 3.00° TCH 53	
1 NM		3.9 NM		8 NM	
CATEGORY	A	B	C	D	
LPV DA	** 993/24 200 (200-½)				
LNAV/VNAV DA	1069/24 276 (300-½)				
LNAV MDA	1160/24	367 (400-½)	1160/35	367 (400-¾)	
CIRCLING	1420-1	624 (700-1)	1420-1¾ 624 (700-1¾)	1560-2½ 764 (800-2½)	