

WAAS Ch <b>45902</b> <b>W10A</b>	APP CRS <b>100°</b>	Rwy Idg <b>6600</b> TDZE <b>601</b> Apt Elev <b>606</b>
----------------------------------------	------------------------	---------------------------------------------------------------

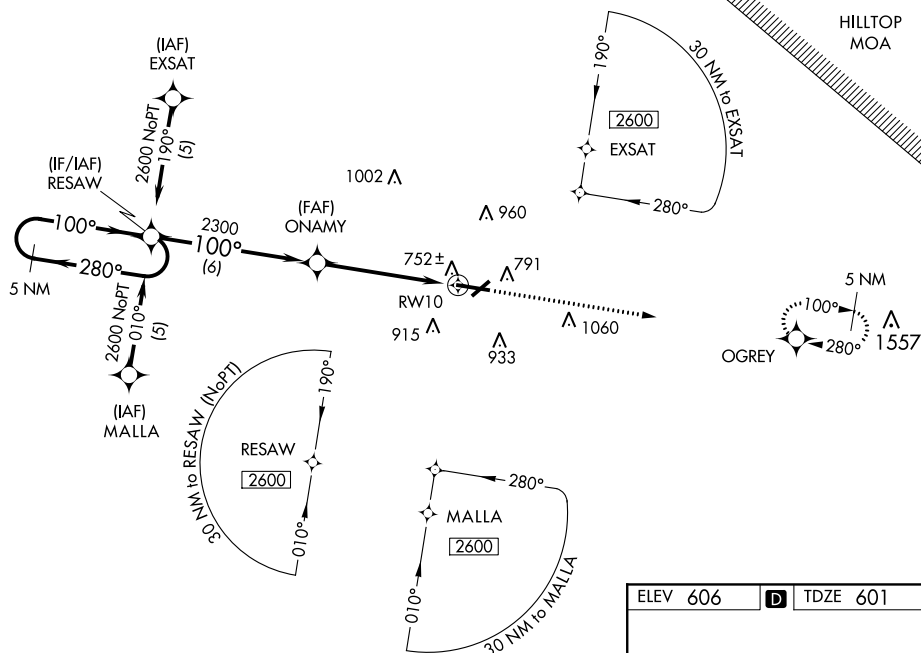
RNAV (GPS) RWY 10  
PURDUE UNIVERSITY (LAF)

**T** If local altimeter setting not received, use Vermilion Rgnl altimeter setting and increase all DAs 89 feet, all MDAs 100 feet. Baro-VNAV NA when using Vermilion Rgnl altimeter setting. VDP NA when using Vermilion Rgnl altimeter setting. For uncompensated Baro-VNAV systems, LNAV/VNAV NA below -16°C (4°F) or above 47°C (116°F). For inoperative MALSR, increase LPV all Cots visibility to 1 mile. DME/DME RNP-0.3 NA. Circling RWY 23 NA at night.



**MISSED APPROACH:** Climb to 2600 direct OGREY and hold.

ATIS <b>127.75</b>	GRISCOM APP CON★ <b>123.85 291,675</b>	LAFAYETTE TOWER★ <b>119.6 (CTAF) 0 393.0</b>	GND CON <b>121.9 393.0</b>	UNICOM <b>122.95</b>
-----------------------	-------------------------------------------	-------------------------------------------------	-------------------------------	-------------------------



EC-2, 03 DEC 2020 to 31 DEC 2020

5 NM Holding Pattern

2600

280°

100°

GP 3.00° TCH 53

RESAW

ONAMY

2300

6 NM

3.9 NM

1.2

\* 1.2 NM to RW10

\* INAV only

VGS1 and RNAV glidepath not coincident (VGS1 Angle 3.00/TCH 50).

2600

OGREY

