

WAAS
CH **60908**
W09B

APP CRS
092°

Rwy Idg
TDZE **790**
Apt Elev **798**

RNAV (GPS) RWY 9R

SOUTH BEND INTL (SBN)

RNP APCH.

▼

▲

Rwy 9R helicopter visibility reduction below ¾ SM NA. Inop table does not apply to LPV all Cnts. For uncompensated Baro-VNAV systems, LNAV/VNAV NA below -19°C or above 54°C. For inop ALS, increase LNAV Cat A/B visibility to RVR 5500 and Cat C/D to RVR 6000.

MALSF

MISSED APPROACH:
Climb to 2600 direct ISUYO and hold.

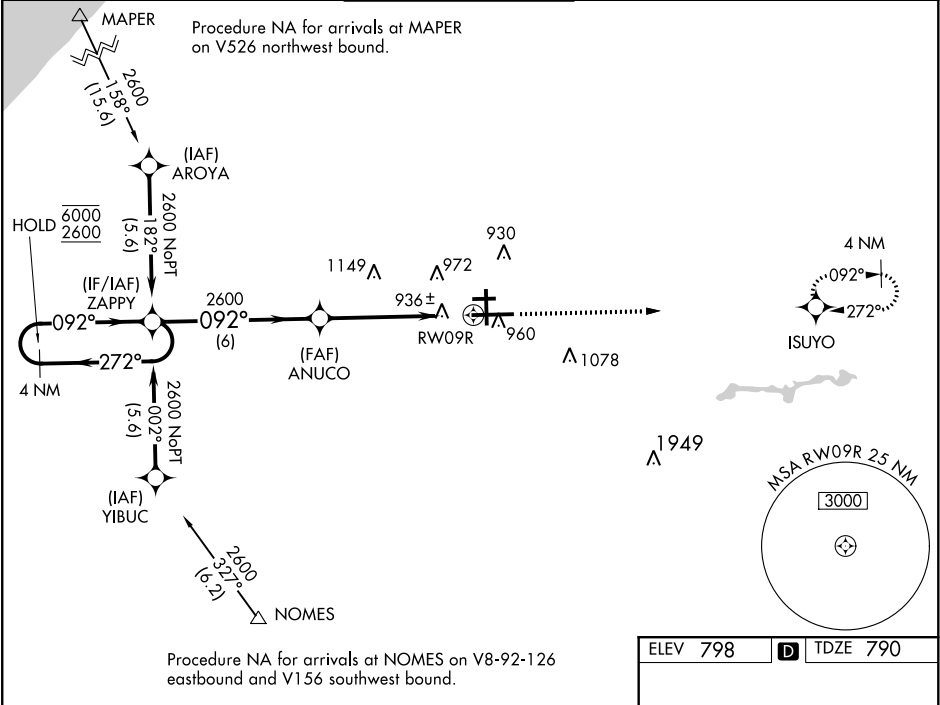
ATIS
120.675

SOUTH BEND APP CON ★
118.55 257.8

SOUTH BEND TOWER ★
135.675 (CTAF) 0 257.8

GND CON
121.7

CLNC DEL
121.9



4 NM Holding Pattern

ZAPPY

ANUCO

2600

ISUYO

2600

* 1.1 NM to RW09R

* LNAV only.

RW09R

GP 3.00° TCH 55

6 NM

4.4 NM

1.1 NM

CATEGORY	A	B	C	D
LPV DA		990/40	200 (200-¾)	
LNAV/VNAV DA		1222/40	432 (500-¾)	
LNAV MDA		1200/40	410 (500-¾)	
CIRCLING	1280-1 482 (500-1)		1440-1¾ 642 (700-1¾)	1500-2¼ 702 (800-2¼)

ELEV 798

TDZE 790

092° to RW09R

HIRL Rwy 9R-27L

MIRL Rwy 18-36

MIRL Rwy 9L-27R