

WAAS CH <b>70524</b> <b>W32A</b>	APP CRS <b>321°</b>	Rwy Idg TDZE Apt Elev	<b>4927</b> <b>621</b> <b>623</b>
--	------------------------	-----------------------------	---

RNAV (GPS) RWY 32

TOLEDO EXECUTIVE (TDZ)

RNP APCH.

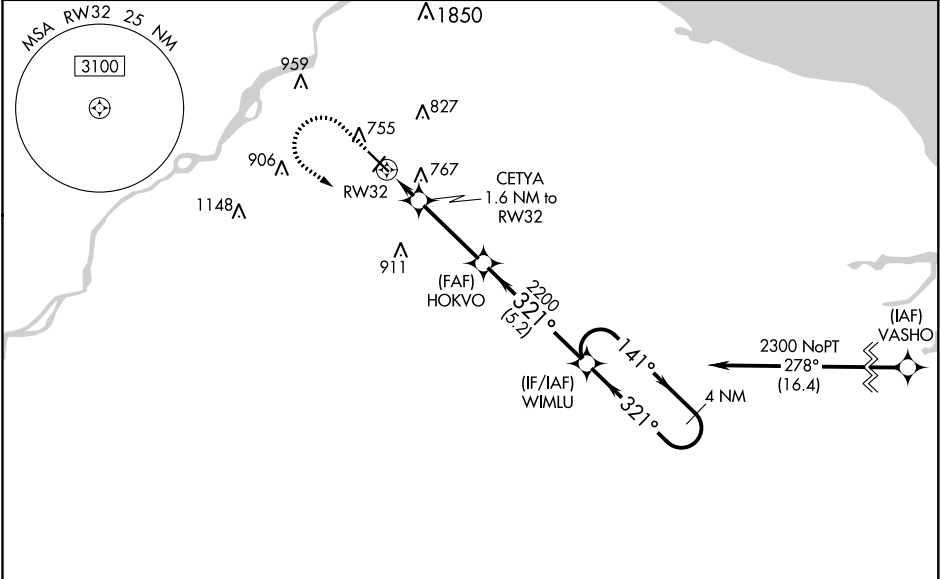
▼

▲

Circling Rwy 14 NA at night. Baro-VNAV NA when using Toledo Express altimeter setting. For uncompensated Baro-VNAV systems, LNAV/VNAV NA below -20°C (-4°F) or above 54°C (130°F). Rwy 32 helicopter visibility reduction below ¾ SM NA. When local altimeter setting not received, use Toledo Express altimeter setting and increase LPV DA to 914, LNAV/VNAV to 1123, increase LPV all Cats visibility ½ SM. Increase all MDA 60 feet and increase LNAV Cats C and D and Circling Cat D visibility ¼ SM.

MISSED APPROACH: Climb to 1100 then climbing left turn to 2300 direct WIMLU and hold.

ASOS <b>121.575</b>	TOLEDO APP CON <b>126.1 307.0</b>	CLNC DEL <b>125.6</b>	UNICOM <b>123.05 (CTAF) 1</b>
------------------------	--------------------------------------	--------------------------	----------------------------------



ELEV 623 D TDZE 621

REIL Rwy 4, 14 and 22 1  
MIRL Rwy 4-22 and 14-32 1

	1100	2300	WIMLU	
	↑	↙	✧	
	* LNAV only.			
		CETYA 1.6 NM to RW32	HOKVO 2200	WIMLU 2300
		↖	↗	↔
		1160*	2200	141° ← 321°
		1.6 NM	3.2 NM	5.2 NM
CATEGORY	A	B	C	D
LPV DA	871-¾ 250 (300-¾)			
LNAV/VNAV DA	1080-1¾ 459 (500-1¾)			
LNAV MDA	1020-1	399 (400-1)	1020-1½	399 (400-1½)
CIRCLING	1080-1 457 (500-1)	1100-1 477 (500-1)	1200-1½ 577 (600-1½)	1320-2¼ 697 (700-2¼)