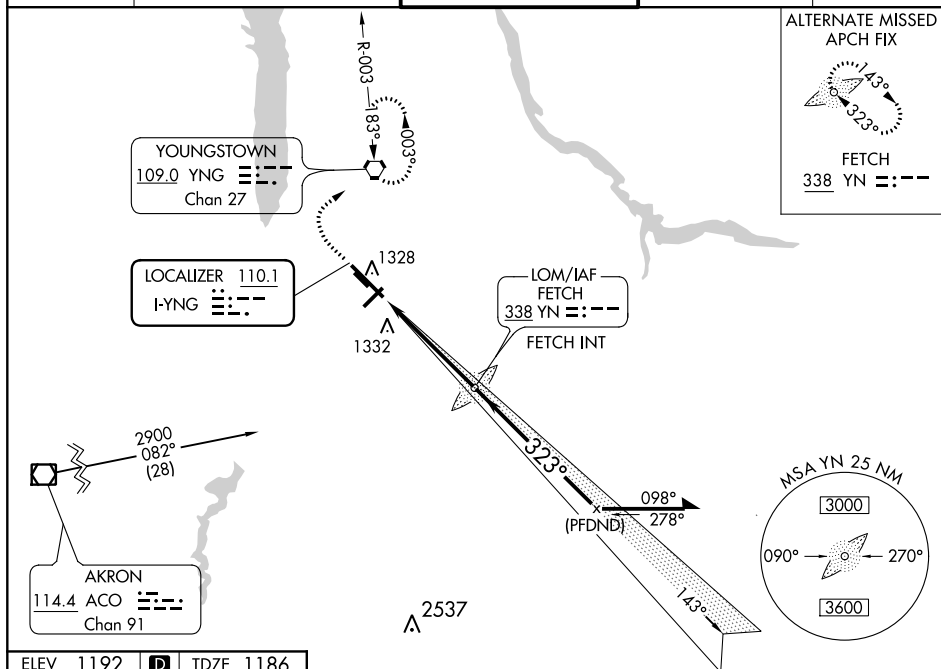


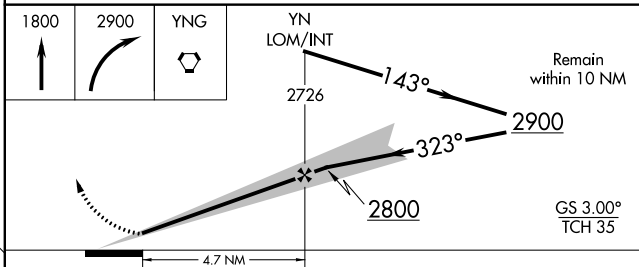
ILS or LOC RWY 32  
YOUNGSTOWN-WARREN RGNL (YNG)


**MISSED APPROACH:** Climb to 1800 then climbing right turn to 2900 direct YNG VORTAC and hold, continue climb-in-hold to 2900.

CLNC DEL  
**118.25**

FAF to MAP 4.7 NM

Knots	60	90	120	150	180
Min:Sec	4:42	3:08	2:21	1:53	1:34



CATEGORY	A	B	C	D
S-ILS 32*	1386/24		200 (200-½)	
S-LOC 32	1640/24	454 (500-½)	1640/45	454 (500-¾)
 CIRCLING	1640-1 448 (500-1)	1660-1 468 (500-1)	1740-1½ 548 (600-1½)	1760-2 568 (600-2)