

PERU, INDIANA

RNAV (GPS) RWY 5

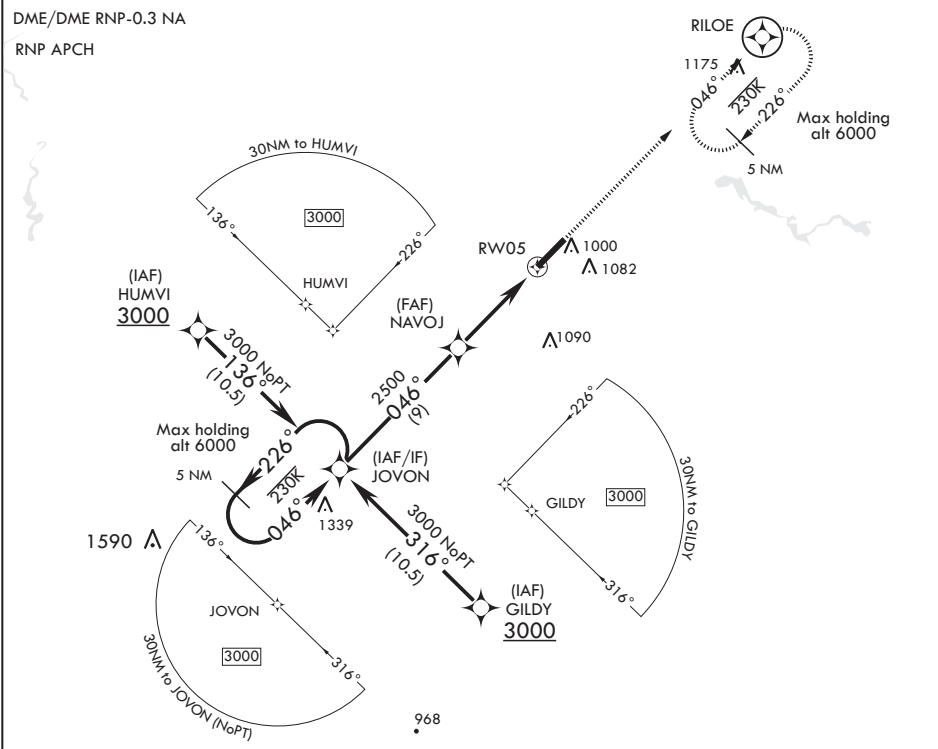
APCH CRS	Rwy Idg	12,501
046°	TDZE	811
	Arpt Elev	811

AL-470 (USAF)

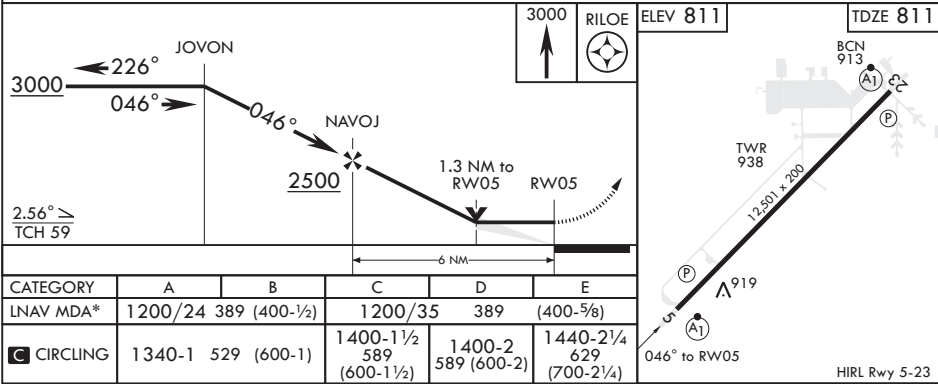
GRISSOM ARB (KGUS)

* When ALS inop, increase CAT AB RVR to 55 and vis to 1 mile, CAT CDE RVR to 60 and vis to 1 1/8 miles.	ALSF-1 	MISSED APPROACH: Climb to 3000 direct RILOE and hold.
---	------------	---

ATIS 108.45 270.8	APP CON/DEP CON 121.05 338.275 E 123.85 291.675 W	TOWER 133.7 290.45	GND CON 128.425 275.8	CLNC DEL 123.7 318.2
----------------------	---	-----------------------	--------------------------	-------------------------



EMERG SAFE ALT 100 NM 3500



PERU, INDIANA

40°39'N - 86°09'W

GRISSOM ARB (KGUS)

Amtdr 6 31JAN19

RNAV (GPS) RWY 5

EC-2, 03 DEC 2020 to 31 DEC 2020

EC-2, 03 DEC 2020 to 31 DEC 2020