

## TACAN or VOR RWY 5

VORTAC GUS <b>108.45</b> Chan <b>21</b> (Y)	APCH CRS <b>052°</b>	Rwy Idg <b>12,501</b> TDZE <b>811</b> Arpt Elev <b>811</b>
---	-------------------------	--

AL-470 [USAF]

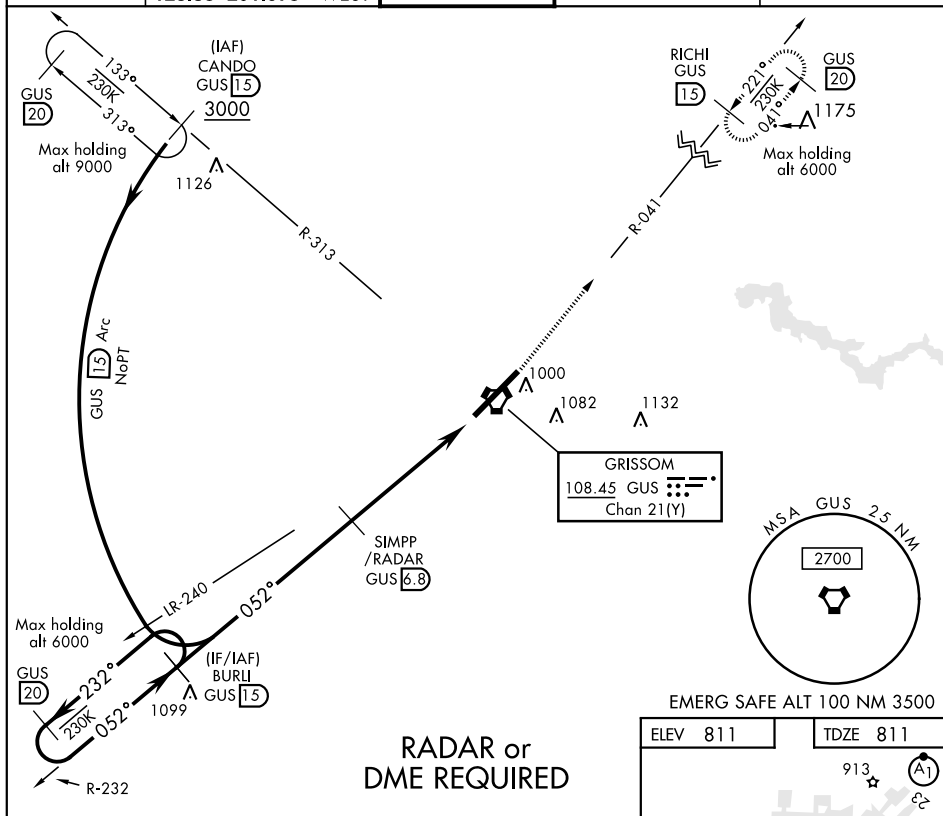
GRISSOM ARB (KGUS)

\* When ALS inop, increase RVR to 55 and vis to 1 mile.



**MISSED APPROACH:** Climb to 3000 on the GUS VORTAC R-041 to RICHI (GUS R-041/15 DME) and hold.

ATIS	GRISSOM APP CON		GRISSOM TOWER ★	GND CON	CLNC DEL
108.45 270.8	121.05 338.275	EAST	133.7 290.45	128.425 275.8	123.7 318.2
	123.85 291.675	WEST			



EMERG SAFE ALT 100 NM 3500

	60	90	120	150	180
Knots	60	90	120	150	180
Min:Sec	5:24	3:36	2:42	2:10	1:48

PERU, INDIANA

40°39'N-86°09'W

GRISSOM ARB (KGUS)

Amdt 8 06DEC18

## TACAN or VOR RWY 5