


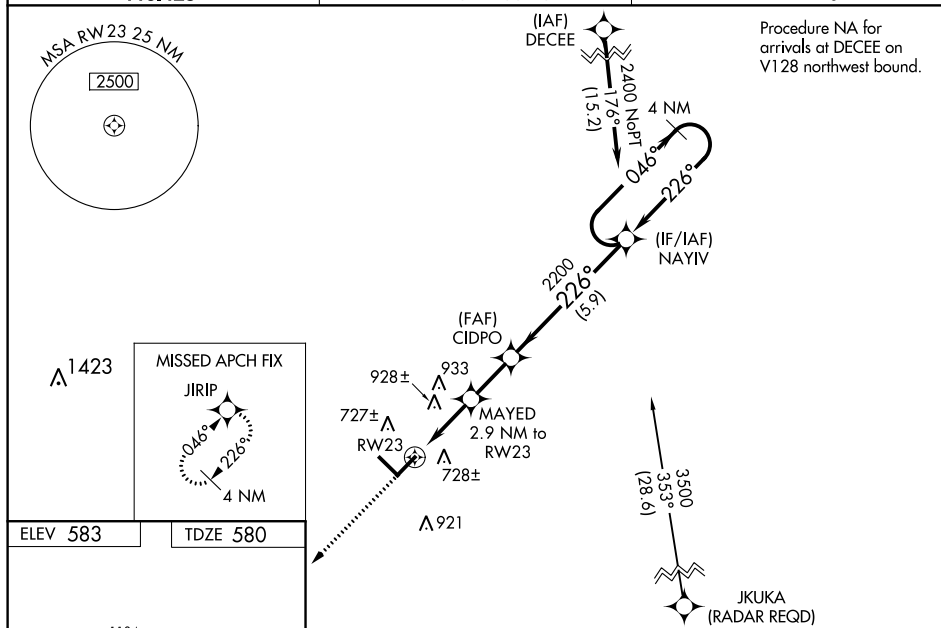


WAAS CH 48903 W23A	APP CRS 226°	Rwy Idg 5501 TDZE 580 Apt Elev 583
--	------------------------	---

RNAV (GPS) RWY 23
FREEMAN MUNI (SER)

 	<p>Baro-VNAV NA when using Louisville Muhammad Ali Intl altimeter setting. For uncompensated Baro-VNAV systems, LNAV/VNAV NA below -16°C (4°F) or above 54°C (130°F). When local altimeter setting not received, use Louisville Muhammad Ali Intl altimeter setting and increase all DA 117 feet and all MDA 120 feet; increase LPV all Cats, LNAV/VNAV all Cats and LNAV Cat C/D visibility ¾ mile, and Circling Cat C/D visibility ½ mile. For inoperative ODALS, increase LNAV/VNAV all Cats visibility to ¾, and LNAV Cat C/D visibility to 1¾. DME/DME RNP-0.3 NA. VDP NA with Louisville Muhammad Ali Intl altimeter setting. For inoperative ODALS when using Louisville Muhammad Ali Intl altimeter setting, increase LNAV/VNAV all Cats visibility to 1¾, and LNAV Cat C/D visibility to 2¾.</p>		<p>MISSED APPROACH: Climb to 2500 direct JIRIP and hold.</p>
---	---	---	---

AWOS-3 119.425	INDIANAPOLIS CENTER 124.775 269.45	UNICOM 122.8 (CTAF) 0
--------------------------	--	---------------------------------



2500 ↑ JIRIP

VGS and RNAV glidepath not coincident (VGS Angle 3.00/TCH 27).

*LNAV only.

RW23

1.7 NM to RW23

MAYED 2.9 NM to RW23

CIDPO

2200

226°

046° → 2400

← 226°

4 NM Holding Pattern

NAYIV

GS 3.00° TCH 40

CATEGORY	A	B	C	D
LPV DA		830- $\frac{3}{4}$	250 (300- $\frac{3}{4}$)	
LNAV/VNAV DA		858- $\frac{3}{4}$	278 (300- $\frac{3}{4}$)	
LNAV MDA	1160- $\frac{3}{4}$	580 (600- $\frac{3}{4}$)	1160-1 $\frac{1}{2}$	580 (600-1 $\frac{1}{2}$)
CIRCLING	1160-1	577 (600-1)	1300-2 717 (800-2)	1300-2 $\frac{1}{4}$ 717 (800-2 $\frac{1}{4}$)