

WAAS CH 99403 W32A	APP CRS 316°	Rwy Idg TDZE 574 Apt Elev 583
--	------------------------	---

RNAV (GPS) RWY 32

FREEMAN MUNI (SE.R)

RNP APCH

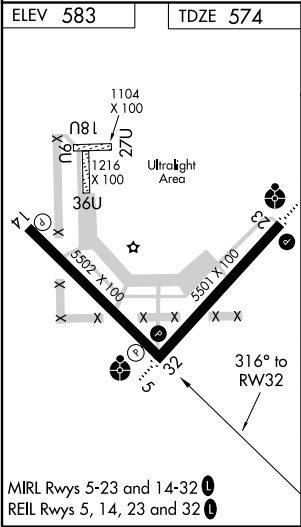
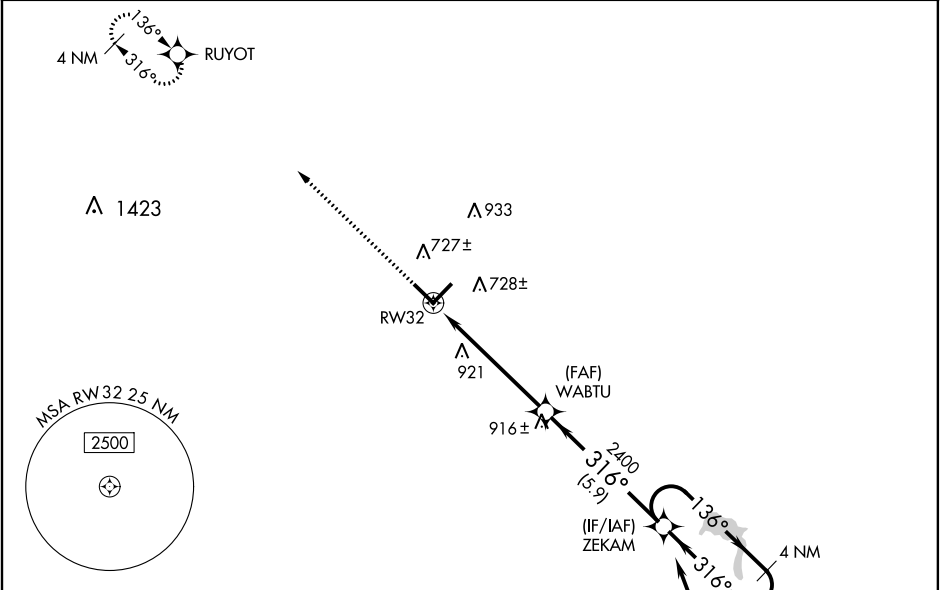
▼

▲ NA

Baro-VNAV NA when using Louisville Muhammad Ali Intl altimeter setting. When local altimeter setting not received, use Louisville Muhammad Ali Intl altimeter setting and increase all DA 117 feet and all MDA 120 feet; increase LPV all Cats, LNAV/VNAV all Cats and LNAV Cat C/D visibility 3⁄8 mile and Circling Cat C/D visibility 1⁄2 mile. VDP NA with Louisville Muhammad Ali Intl altimeter setting. For uncompensated Baro-VNAV systems, LNAV/VNAV NA below -16°C or above 54°C. Rwy 32 helicopter visibility reduction below 3⁄4 SM NA.

MISSED APPROACH:
Climb to 2600 direct
RUYOT and hold.

AWOS-3 119.425	INDIANAPOLIS CENTER 124.775 269.45	UNICOM 122.8 (CTAF) 0
--------------------------	--	---------------------------------



2600	RUYOT	VGSI and RNAV glidepath not coincident (VGSI Angle 3.00/TCH 33).		4 NM
		ZEKAM Holding Pattern		
*LNAV only.		WABTU	2400	3500
*1.6 NM to RW32			316°	136°
RW32			2400	GP 3.00° TCH 40
1.6		4.1 NM	5.9 NM	
CATEGORY	A	B	C	D
LPV DA	859-1		285 (300-1)	
LNAV/VNAV DA	853-1		279 (300-1)	
LNAV MDA	1140-1	566 (600-1)	1140-15⁄8	566 (600-15⁄8)
CIRCLING	1140-1	557 (600-1)	1300-2 717 (800-2)	1300-2 1⁄4 717 (800-2 1⁄4)