

WAAS CH 62914 W04A	APP CRS 041°	Rwy Idg 10701 TDZE 1057 Apt Elev 1077
--	------------------------	--

RNAV (GPS) RWY 4L

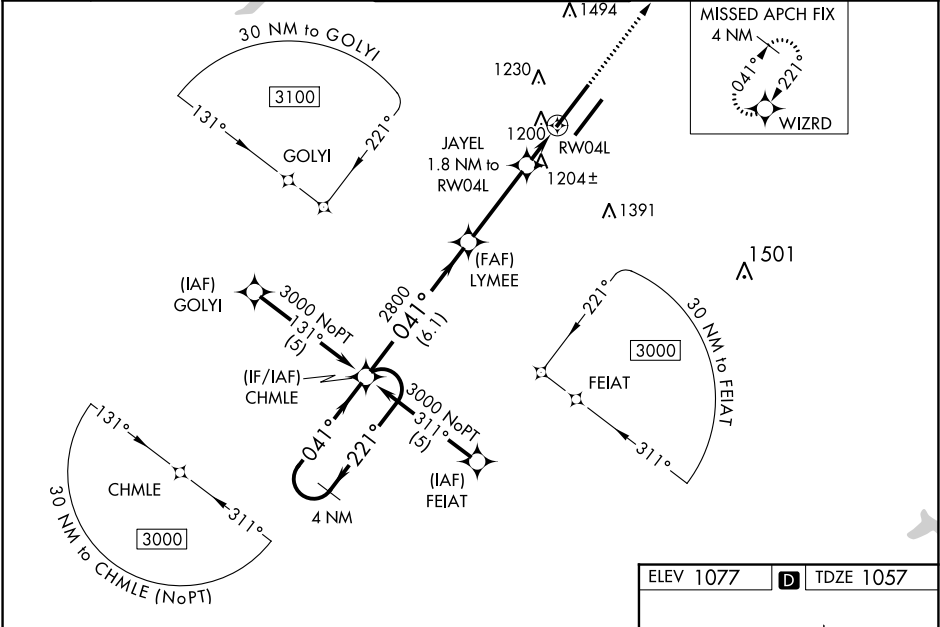
WILMINGTON AIR PARK (ILN)

▼ For inoperative MALSR when using James M. Cox Dayton Intl altimeter setting, increase LPV visibility to RVR 5000 all Cats. For inop MALSR, increase LNAV Cat D visibility to RVR 6000. For uncompensated Baro-VNAV systems, LNAV/VNAV NA below -17 °C (2°F) or above 46°C (114°F). DME/DME RNP-0.3 NA. When local altimeter setting not received, use James M. Cox Dayton Intl altimeter setting: increase LPV DA to 1347, LNAV/VNAV DA to 1595 and all visibilities to RVR 5500, increase all MDA 100 feet and LNAV Cat C/D visibility to RVR 5500 and increase Circling Cat C/D visibility ½ SM. **RVR 1800 authorized with use of FD or AP or HUD to DA, NA when using James M. Cox Dayton Intl altimeter setting.

MALSR

MISSED APPROACH:
Climb to 3000 direct
WIZRD and hold.

ATIS 124.925	COLUMBUS APP CON 118.85 269.275	WILMINGTON TOWER * 119.475 (CTAF) 0	GND CON 121.6	CLNC DEL 128.85
------------------------	---	---	-------------------------	---------------------------



4 NM Holding Pattern

3000 ← 221°
041° →

GP 3.00°
TCH 51

CHMLE

VGSI and RNAV glidepath not coincident (VGSI Angle 3.00/TCH 62).

LYMEE

JAYEL 1.8 NM to RW04L

*1.1 NM to RW04L

RW04L

*1680

6.1 NM 3.5 NM 0.7 1.1 NM

3000 WIZRD

*LNAV only.

CATEGORY	A	B	C	D
LPV DA **	1257/24 200 (200-½)			
LNAV/VNAV DA	1505/50 448 (500-1)			
LNAV MDA	1460/24 403 (400-½)	1460/40 403 (400-¾)	1460/50 403 (400-1)	
CIRCLING	1540-1 463 (500-1)	1860-2¼ 783 (800-2¼)	1860-2½ 783 (800-2½)	

