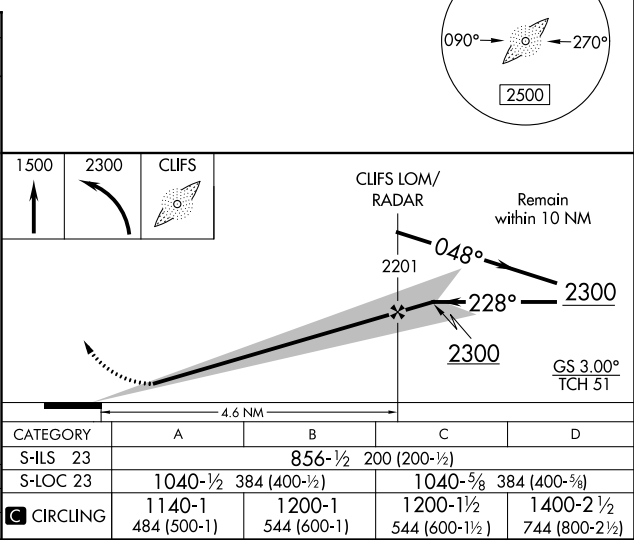
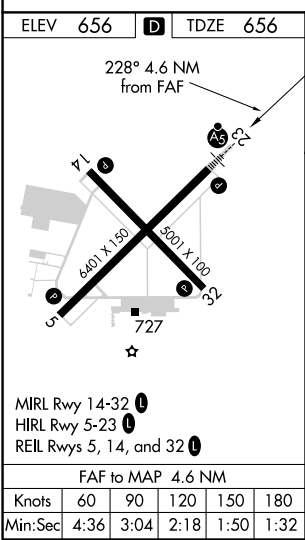
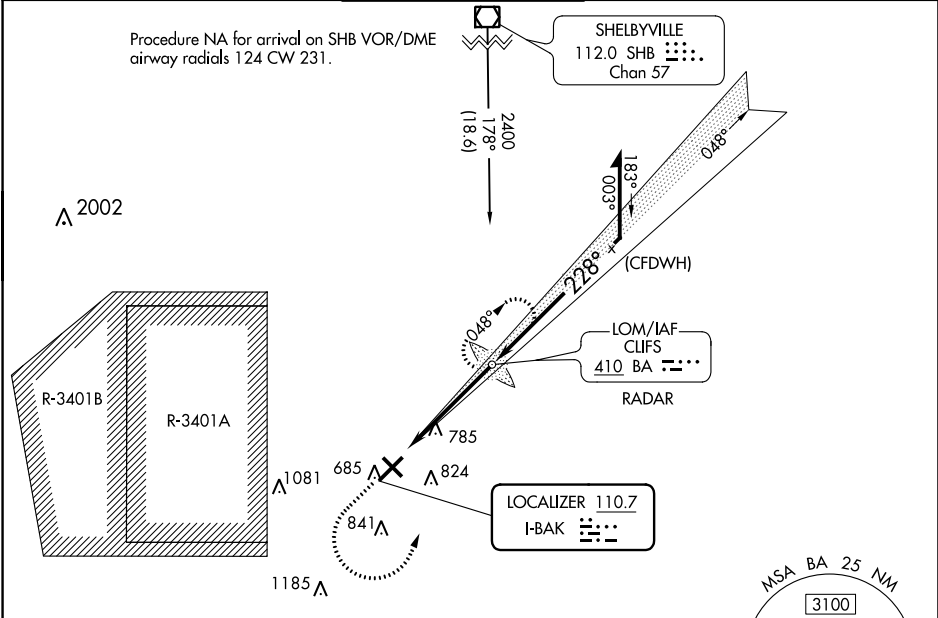


LOC I-BAK 110.7	APP CRS 228°	Rwy Idg TDZE Apt Elev	6401 656 656
---------------------------	------------------------	-----------------------------	---

ILS or LOC RWY 23
COLUMBUS MUNI (BAK)

ADF or RADAR required.			MALSR 	MISSED APPROACH: Climb to 1500 then climbing left turn to 2300 direct CLIFS LOM and hold.	
AWOS-3 119.75	INDIANAPOLIS APP CON 134.85 317.8	COLUMBUS TOWER ★ 118.6 (CTAF) 0	GND CON 121.6	CLNC DEL 134.85	UNICOM 122.95



EC-2, 03 DEC 2020 to 31 DEC 2020

EC-2, 03 DEC 2020 to 31 DEC 2020