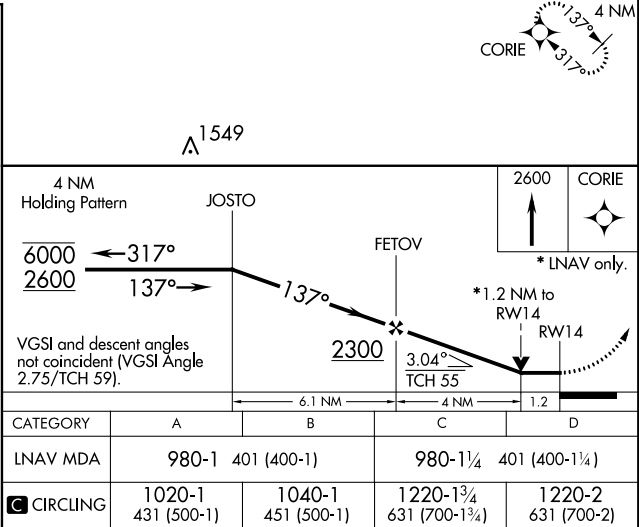
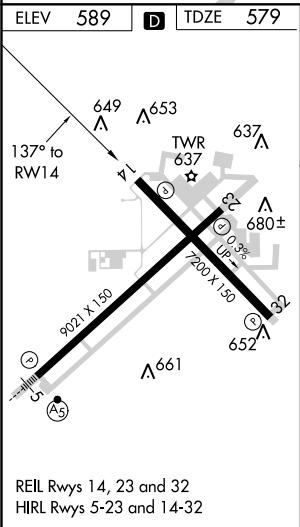
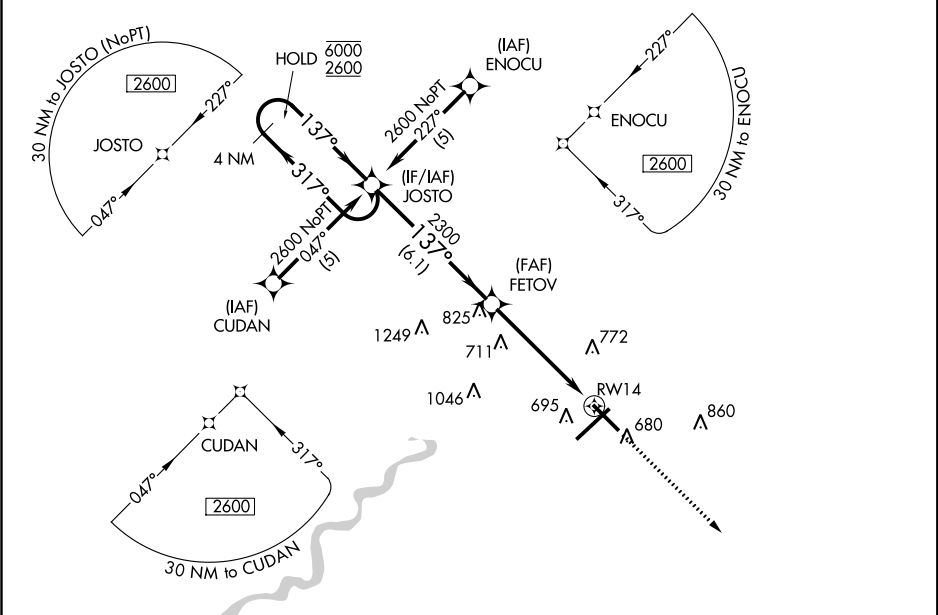


APP CRS	Rwy Idg	7200
137°	TDZE	579
	Apt Elev	589

RNAV (GPS) RWY 14
TERRE HAUTE RGNL (HUF')

RNP APCH.		MISSED APPROACH: Climb to 2600 direct CORIE and hold.	
VDP NA when using Paris altimeter setting. When local altimeter setting not received, use Paris altimeter setting and increase all MDA 80 feet, LNAV Cat C/D visibility 1/8 SM, Circling Cat C/D 1/4 SM. Rwy 14 helicopter visibility reduction below 3/4 SM NA.			
ATIS 127.5 269.375	HULMAN APP CON 125.45 339.8	HULMAN TOWER 134.725 239.0	GND CON 121.6 348.6



EC-2, 03 DEC 2020 to 31 DEC 2020

EC-2, 03 DEC 2020 to 31 DEC 2020