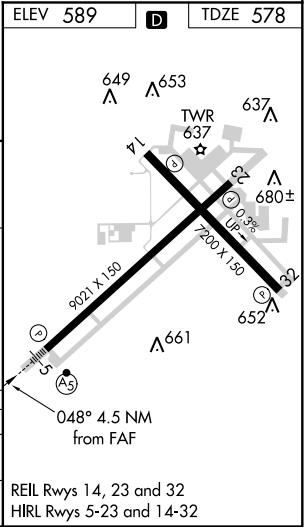
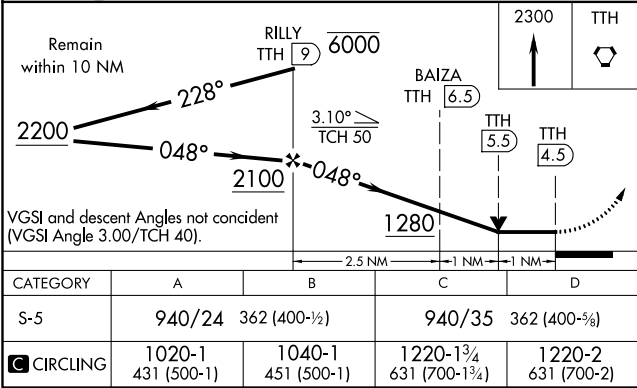
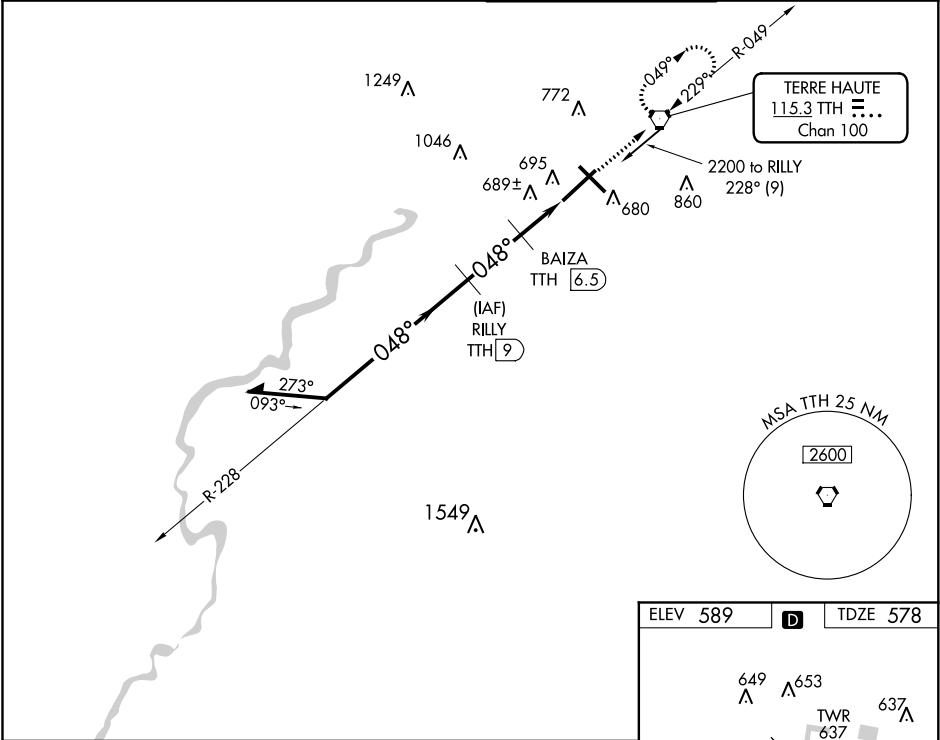


VORTAC TTH	APP CRS	Rwy Idg	9020
115.3	048°	TDZE	578
Chan 100		Apt Elev	589

VOR RWY 5
TERRE HAUTE RGNL (HUF')

DME Required.	MALS R	MISSED APPROACH: Climb to 2300 direct TTH VORTAC and hold.
VDP NA when using Paris, IL altimeter setting. When local altimeter setting not received, use Paris, IL altimeter setting and increase all MDA 80 feet, S-5 Cat C/D visibilities to RVR 4500 and Circling Cat C/D visibilities ¼ mile. For inop ALS, increase S-5 Cat C/D visibility to RVR 5500.		

ATIS	HULMAN APP CON	HULMAN TOWER	GND CON
127.5 269.375	125.45 339.8	134.725 239.0	121.6 348.6



EC-2, 03 DEC 2020 to 31 DEC 2020

EC-2, 03 DEC 2020 to 31 DEC 2020