

LOC/DME I-GGZ	APP CRS	Rwy Idg	8204
108.3	234°	TDZE	1226
Chan 20		Apt Elev	1228

ILS or LOC RWY 23

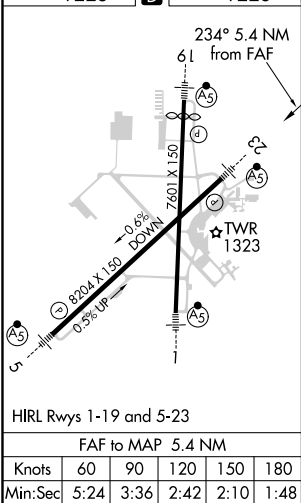
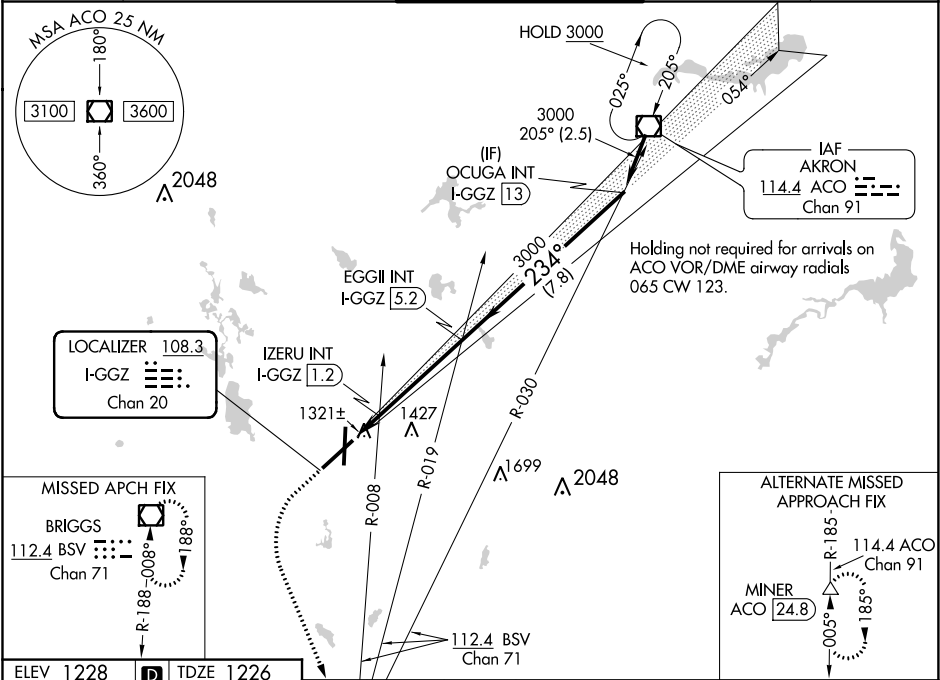
AKRON-CANTON RGNL (CAK)

**RVR 1800 authorized with use of FD or AP or HUD to DA.

MALSR

MISSED APPROACH: Climb to 2500 then climbing left turn to 3000 direct BSV VOR/DME and hold.

ATIS	CLEVELAND APP CON *	AKRON-CANTON TOWER	GND CON	CLNC DEL
121.05	125.5 269.25	134.75 279.575	121.7 348.6	132.05



ELEV 1228	TDZE 1226	BSV	EGG II INT I-GGZ 5.2	OCUGA INT I-GGZ 13
2500	3000	3000	3000	3000
*LOC only	IZERU INT I-GGZ 1.2	IZERU INT I-GGZ 1.2	3000	Procedure Turn NA
I-GGZ DME ANTENNA	I-GGZ 0.2	I-GGZ 0.2	3000	GS 3.00° TCH 45
1.4 NM	4 NM	7.8 NM		
CATEGORY	A	B	C	D
S-ILS 23	**1426/24 200 (200-1/2)			
S-LOC 23	1700/24	474 (500-1/2)	1700/50	474 (500-1)
CIRCLING	1760-1	532 (600-1)	1760-1 1/2	1780-2
			532 (600-1 1/2)	552 (600-2)
IZERU FIX MINIMUMS				
S-LOC 23	1580/24	354 (400-1/2)	1580/40	354 (400-3/4)
CIRCLING	1760-1	532 (600-1)	1760-1 1/2	1780-2
			532 (600-1 1/2)	552 (600-2)