

WAAS CH <b>56405</b> <b>W25A</b>	APP CRS <b>254°</b>	Rwy Idg TDZE Apt Elev	<b>4558</b> <b>812</b> <b>813</b>
--	------------------------	-----------------------------	---

RNAV (GPS) RWY 25  
FINDLAY (FDY)

RNP APCH

**T** For uncompensated baro-VNAV systems, LNAV/VNAV NA below -16°C or above 47°C. Baro-VNAV and VDP NA when using Lima Allen County altimeter setting. When local altimeter setting not received, use Lima Allen County altimeter setting: increase all DAs/MDAs 80 feet; increase LPV visibility  $\frac{1}{8}$  SM all Cats; increase LNAV Cat C/D and Circling Cat C/D visibility  $\frac{1}{4}$  SM.

**MISSED APPROACH:**  
Climb to 2500 direct  
PURIC and hold.

ASOS <b>132.85</b>	TOLEDO APP CON <b>120.8 317.55</b>	UNICOM <b>122.725 (CTAF) 0</b>
-----------------------	---------------------------------------	-----------------------------------

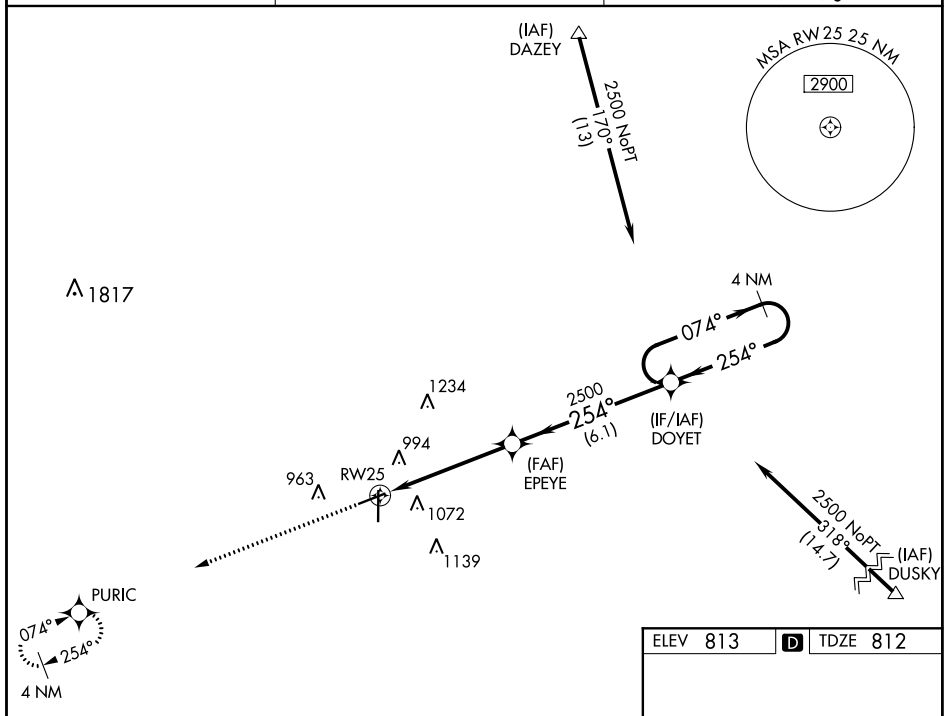


Diagram illustrating a VGS and RNAV glidepath not coincident (VGS Angle 3.00°/TCH 31°).

4 NM Holding Pattern

EPEYE 2500

DOYET

\* LNAV only

\* 1.4 NM to RW25

RW25

1.4 NM

3.7 NM

6.1 NM

254°

074° → 2500

← 254°

GP 3.00° TCH 45

CATEGORY	A	B	C	D
LPV DA	1116-1	304 (400-1)		
LNAV/VNAV DA	1411-2	599 (600-2)		
LNAV MDA	1280-1 468 (500-1)	1280-1 <sup>3</sup> / <sub>8</sub> 468 (500-1 <sup>3</sup> / <sub>8</sub> )	1280-1 <sup>1</sup> / <sub>2</sub> 468 (500-1 <sup>1</sup> / <sub>2</sub> )	
CIRCLING	1440-1 627 (700-1)	1440-1 <sup>3</sup> / <sub>4</sub> 627 (700-1 <sup>3</sup> / <sub>4</sub> )	1440-2 627 (700-2)	

