

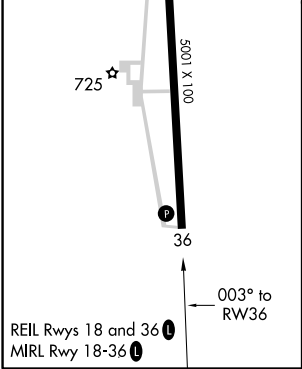
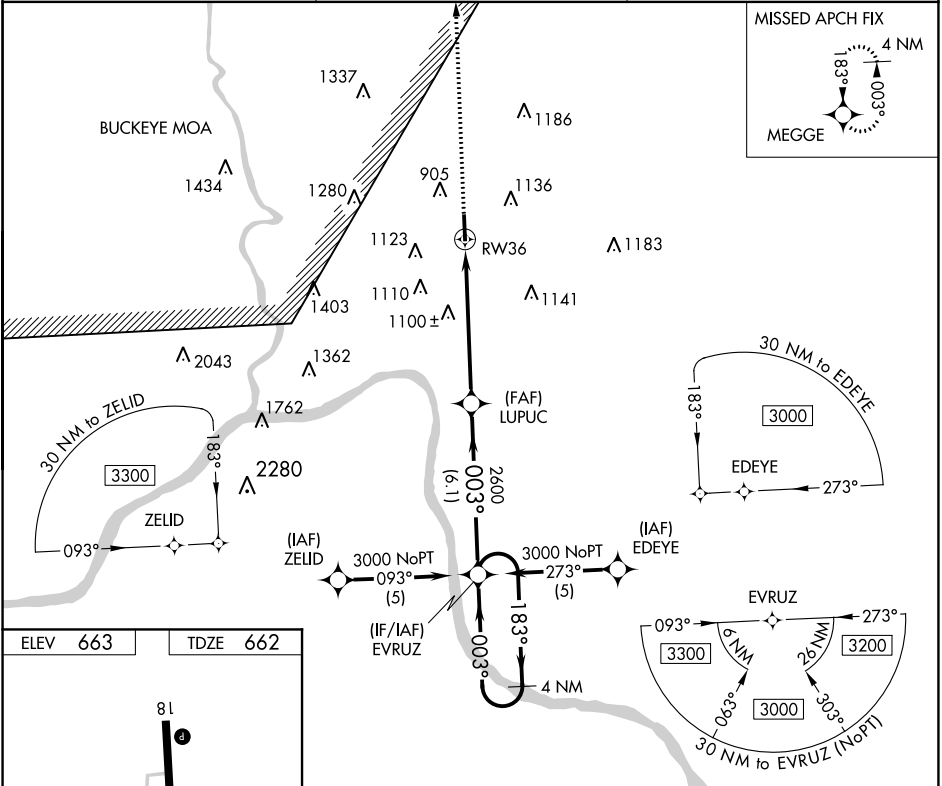
WAAS CH <b>70408</b> <b>W36A</b>	APP CRS <b>003°</b>	Rwy Idg TDZE <b>662</b> Apt Elev <b>663</b>	<b>5001</b>
--	------------------------	---	-------------

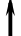

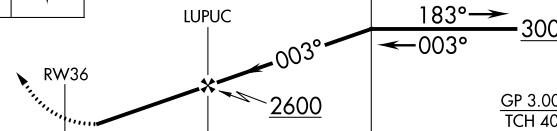
**RNAV (GPS) RWY 36**  
GREATER PORTSMOUTH RGNL (PMH)

**7** When local alimeter setting not received, use Huntington alimeter setting and increase all DA 96 feet and all MDA 100 feet and LPV visibility ¼ mile all Cats, RNAV Cat B visibility ¼ mile, Cat C, D visibility ½ mile, and Circling Cat B visibility ¼ mile, Cat C visibility ½ mile and Cat D visibility ¼ mile. Visibility reduction by helicopters NA. DME/DME RNP-0.3 NA.

**MISSED APPROACH:**  
Climb to 3000 direct MEGGE and hold.

AWOS-3 <b>125.175</b>	HUNTINGTON APP CON <b>128.4 270.1</b>	UNICOM <b>122.8 (CTAF) 0</b>
--------------------------	--	---------------------------------



3000	MEGGE	VGSI and RNAV glidepath not coincident (VGSI Angle 3.00/TCH 31).		4 NM Holding Pattern
				
CATEGORY	A	B	C	D
LPV DA	912-1 250 (300-1)			
LNAV MDA	1400-1 738 (800-1)		1400-2 738 (800-2)	1400-2¼ 738 (800-2¼)
CIRCLING	1400-1 737 (800-1)		1400-2 737 (800-2)	1440-2½ 777 (800-2½)