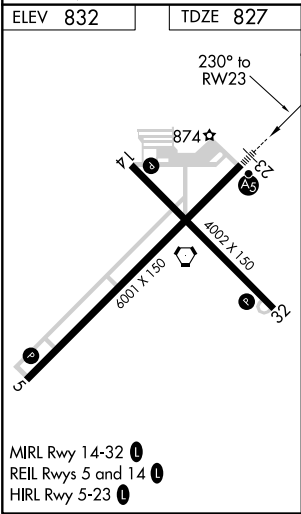
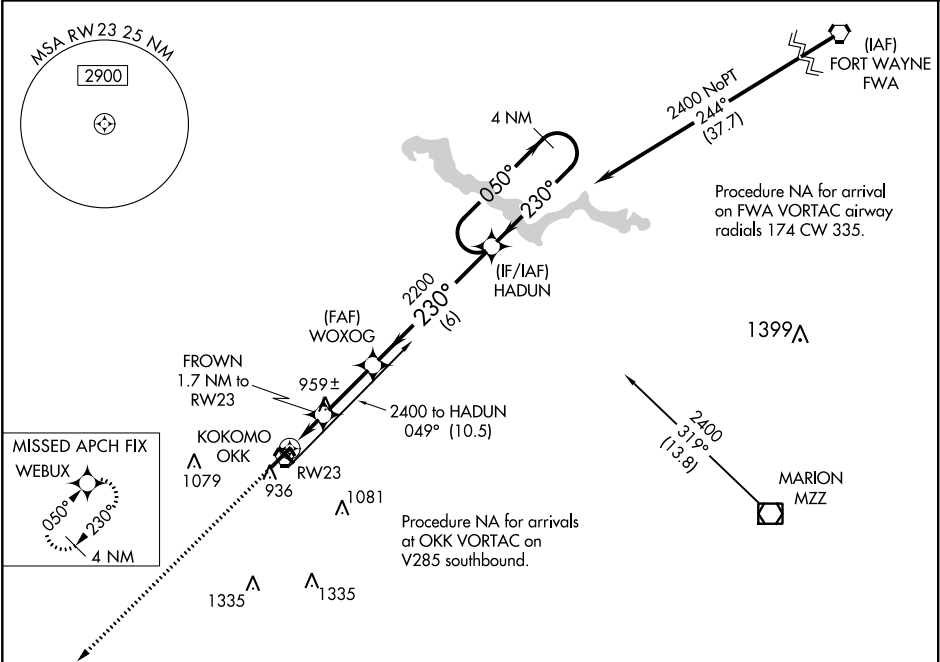


WAAS CH 40119 W23A	APP CRS 230°	Rwy Idg TDZE Apt Elev	6001 827 832
--	------------------------	-----------------------------	---

RNAV (GPS) RWY 23

KOKOMO MUNI (OKK)

<div><div><div></div><div></div></div><div>For uncompensated Baro-VNAV systems, LNAV/VNAV NA below -16°C (4°F) or above 54°C (130°F). DME/DME RNP-0.3 NA.</div></div>	<div>MALSR<div></div></div>	MISSED APPROACH: Climb to 3000 direct WEBUX and hold.	
AWOS-3PT 113.5	GRISSEM APP CON★ 121.05 338.275	CLNC DEL 120.0	UNICOM 123.0 (CTAF) 0



3000

↑

WEBUX

✧

*LNAV only

FROWN
1.7 NM to
RW23

*1.1 NM to
RW23

1.1

0.6

2.5 NM

6 NM

WOXOG
2200

230°

2200

HADUN

050° →

← 230°

2400

GP 3.00°
TCH 44

1400*

CATEGORY	A	B	C	D
LPV DA	1027-½ 200 (200-½)			
LNAV/ VNAV DA	1224-⅞ 397 (400-⅞)			
LNAV MDA	1220-½ 393 (400-½)		1220-¾ 393 (400-¾)	
CIRCLING	1260-1 428 (500-1)	1300-1 468 (500-1)	1400-1½ 568 (600-1½)	1640-2½ 808 (900-2½)