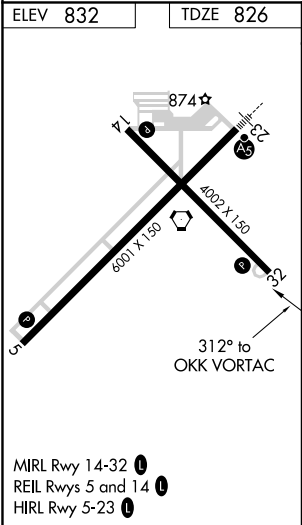
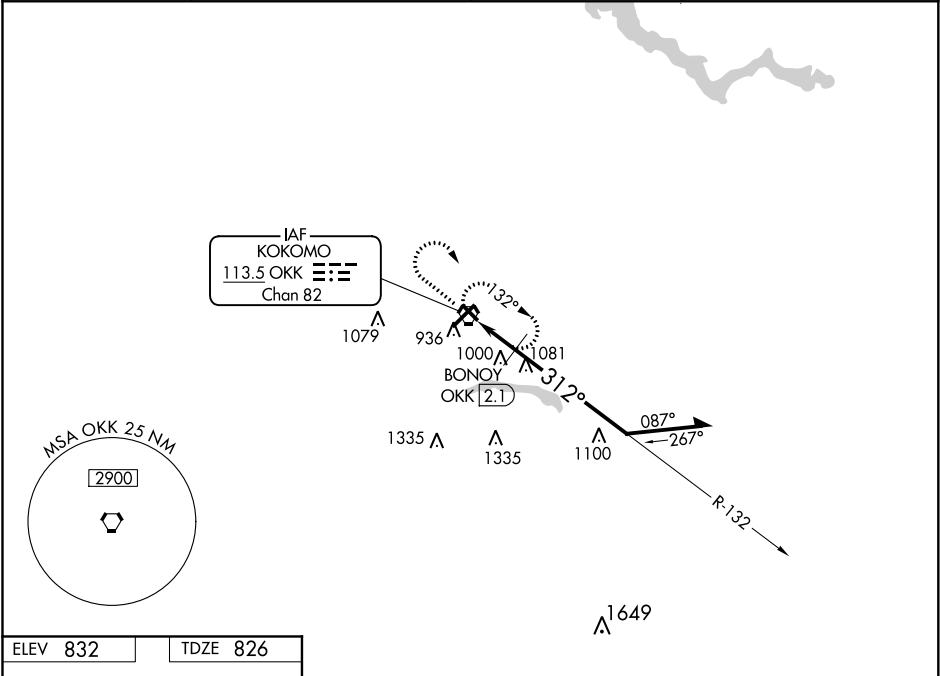





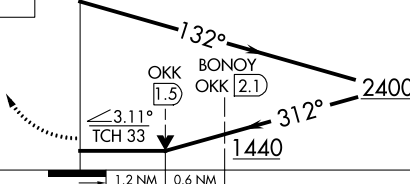

VORTAC OKK	APP CRS	Rwy Idg	4002
113.5	312°	TDZE	826
Chan 82		Apt Elev	832

VOR RWY 32

KOKOMO MUNI (OKK)

<div><div></div><div></div></div> <div>Rwy 32 helicopter visibility reduction below ¾ SM NA.</div>		MISSED APPROACH: Climb to 2600 then right turn direct OKK VORTAC and hold.	
AWOS-3PT 113.5	GRISSOM APP CON★ 121.05 338.275	CLNC DEL 120.0	UNICOM 123.0 (CTAF) 0



2600		OKK		OKK VORTAC		Remain within 10 NM			
									
									
CATEGORY		A		B		C		D	
S-32		1440-1		614 (700-1)		1440-1¾		614 (700-1¾)	
 CIRCLING		1440-1		608 (700-1)		1440-1¾		1640-2½	
						608 (700-1¾)		808 (900-2½)	