

WAAS
CH **90429**
W23A

APP CRS
233°

Rwy Idg
TDZE **650**
Apt Elev **651**

5801
650
651

RNAV (GPS) RWY 23

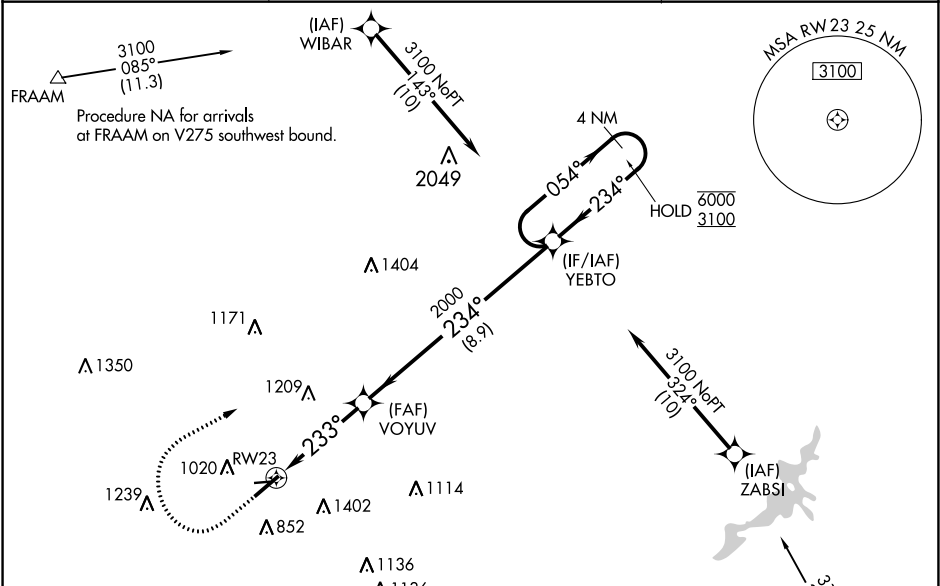
MIDDLETOWN RGNL/HOOK FIELD (MWO)

RNP APCH.

Circling NA to Rwy 8 and 26. Circling Rwy 5 NA at night.
Rwy 23 helicopter visibility reduction below $\frac{3}{4}$ SM NA.
For uncompensated Baro-VNAV systems, LNAV/VNAV NA below -16°C or above 54°C.

MISSED APPROACH: Climb to 1800 then climbing right turn to 3100 direct YEBTO and hold.

AWOS-3 120.025	COLUMBUS APP CON 118.85 269.275	UNICOM 123.0 (CTAF) 0
--------------------------	---	---------------------------------



ELEV 651

TDZE 650

233° to RW23

3026 X 160

6100 X 100

Λ 855

MIRL Rwy 5-23 0

REIL Rwy 5 and 23 0

1800

3100

YEBTO

VGSI and RNAV glidepath not coincident (VGSI Angle 2.50/TCH 20).

YEBTO

1800

3100

YEBTO

1.8 NM

2.3 NM

8.9 NM

Λ 855

3026 X 160

6100 X 100

Λ 855

MIRL Rwy 5-23 0

REIL Rwy 5 and 23 0

CATEGORY	A	B	C	D
LPV DA	986-1 $\frac{1}{8}$ 336 (400-1 $\frac{1}{8}$)			
LNAV/VNAV DA	1083-1 $\frac{1}{2}$ 433 (500-1 $\frac{1}{2}$)			
LNAV MDA	1140-1	490 (500-1)	1140-1 $\frac{3}{8}$	490 (500-1 $\frac{3}{8}$)
CIRCLING	1380-1	729 (800-1)	1380-2 729 (800-2)	1840-3 1189 (1200-3)